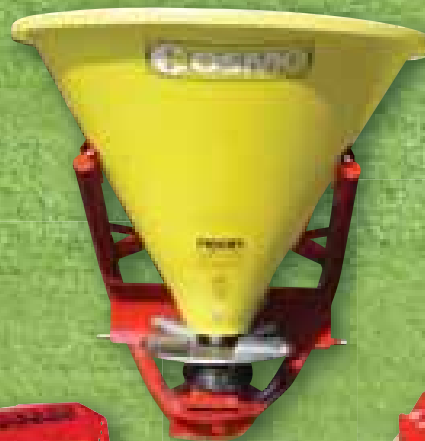
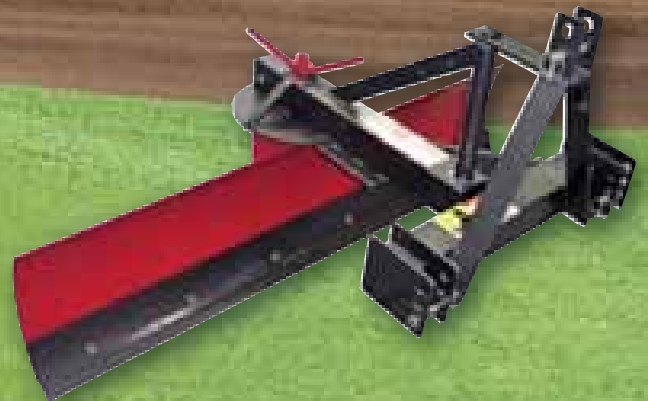




# KANGA

FARM EQUIPMENT



# CARONI

IMPLEMENTS PTY LTD

Notes

[www.farmimplements.com.au](http://www.farmimplements.com.au)

**T: (03) 9706 5166 F: (03) 9706 5050**

Email: [kanga@farmimplements.com.au](mailto:kanga@farmimplements.com.au)





## Kanga Table of Contents

XH Range Rotary Cutter .....	2
H Range Rotary Cutter .....	3
M Range Rotary Cutter .....	4
S Range Rotary Cutter .....	5
Mini Range Rotary Cutter .....	6
XH Hydraulic Grader Blade .....	7
H Range Hydraulic/Manual Adjustment Grader Blade .....	7
Multi Clamp Grader Blade .....	8
M Range Grader Blade .....	8
S Range Grader Blade .....	9
Mini Range Grader Blade .....	9
XH Range Hydraulic Down Pressure Post Hole Digger .....	10
Post Hole Digger Augers .....	10
H Range (75hp) Post Hole Digger .....	11
M Range (50hp) Post Hole Digger .....	11
Mini Range (35hp) Post Hole Digger .....	11
H Range Three (3) Tine Ripper .....	12
M Range Three (3) Tine Ripper .....	12
H Range Single Tine Ripper .....	13
M Range Single Tine Ripper .....	13
Mini Range Single Tine Ripper .....	13
Box Scrapers .....	14
Stick Rake .....	14
Tipping Box Carryall .....	15
Hydraulic Transport Box .....	15
Wood Floor Carryall .....	16
Pallet Fork .....	16
H Range Jib Crane .....	16
Spring Release Eurotiller .....	17
S Tine Cultivator with Crumbler Roller .....	17
Stump Jump Chisel Plough .....	17
Pasture Harrows and Harrow Rake .....	18
Bale Handling Equipment .....	19
Rotary Cutter or Pasture Topper - Twin Head .....	20
Rotary Cutter - Tri Head .....	21
50hp Orchard/Vineyard Dual Side Discharge Rotary Cutter .....	22
75hp Orchard/Vineyard Dual Side Discharge Rotary Cutter .....	23



# Notes

[www.farmimplements.com.au](http://www.farmimplements.com.au)

**T: (03) 9706 5166 F: (03) 9706 5050**

Email: [caroni@farmimplements.com.au](mailto:caroni@farmimplements.com.au)

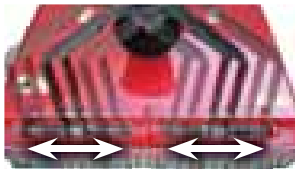
## Caroni Table of Contents

Flail Mower - TB Series .....	24
Flail Mulcher - SL Series .....	25
Flail Mulcher - TMX Series .....	26
Flail Mulcher - TR Series .....	27
Flail Mulcher - TUF Series .....	28
Flail Mulcher (Front/Rear) - TZF Series .....	29
Rotary Hoe - SA-K Series .....	30
Rotary Hoe - SB Series .....	31
Rotary Hoe - CS Series .....	32
Rotary Hoe - SMR Series .....	33
Rotary Hoe - SPR Series .....	34
Rotary Hoe - RG Series .....	35
Spinner Spreader (3PL) - P/PL Series .....	36
Spinner Spreader (Tow Type) - PTP/PTB Series .....	37
Spinner Spreader (Twin Spin) - RE/RX Series .....	38
Pendulum Spreader - PDV/PDHV Series .....	39
Finishing Mower - FA/TC Series (Side and Rear Discharge) .....	40
Cement Mixer (3PL) - Mixer 80 Series .....	41
Hay Rake .....	42
Hay Mower .....	42
Mini Round Baler .....	43
Mini Round Bale Wrapper .....	43
Mini Square Baler .....	44
Vineyard/Orchard Weeders .....	45
Manual Sweeper .....	46
Petrol Sweeper .....	46
Petrol Leaf Vacuum .....	47

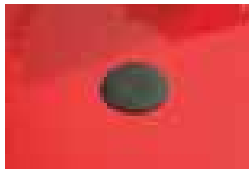
# XH Range Rotary Cutter



<b>Deck material</b>	Galvanised 5mm, fully welded top with 10mm side walls
<b>Deck profile</b>	Folded, "clean top" design with rounded back
<b>Deck reinforcing</b>	32x16mm full sub-frame
<b>Gearbox</b>	130hp (540rpm) 1:1.92 (1800mm) or 1:1.467 (2100mm) ratio with 20 spline input shaft
<b>PTO shaft</b>	Series W2600 (120hp/90kw), star profile tube and safety covers with patent lever release
<b>Clutch</b>	150hp, 6 plate, 200mm (8") safety clutch
<b>Finish</b>	Deck, hot dip galvanised. Other parts powder coated baked enamel
<b>Tower</b>	Multi-mount, 90x16mm, double clevis, floating
<b>Tower offset</b>	Positive locking multi-mount (centre mount with 200mm (8") left or right offset)
<b>Tower chain</b>	13mm T80 rated chain. (Max. load 4500kg)
<b>Skids</b>	Adjustable skid (65 - 145mm) with 8mm wall and 16mm runner
<b>Cutter bar</b>	130mm spring steel, bolt together with drive lugs and counter sunk blade bolts
<b>Blades</b>	Hardened carbon/chrome (spring steel) stepped down, twisted with replaceable hardened bush
<b>Linkage/mounting</b>	Double clevis, category 2 linkage with pins and clips
<b>Front and rear chains</b>	10mm front and rear safety chain with wire rope replacement system



Multi mount tower



Blade bolt inspection cap



Blade exclusion zones



Waterproof manual holder



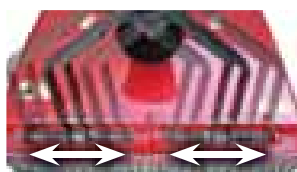
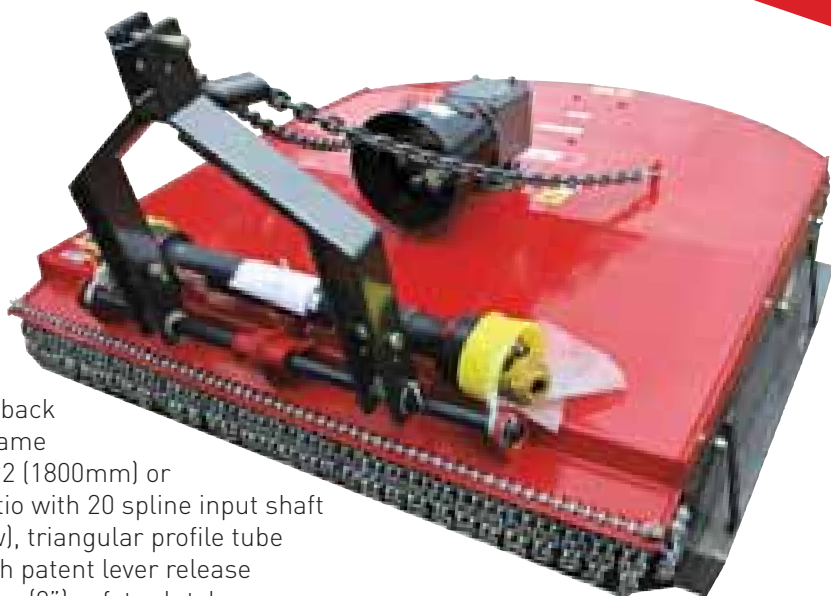
Countersunk blade bolts

Code	Description	Cutting Width	Overall Width	Weight (kg)	Tip Speed (ft/min)	RRP (exc. GST)	RRP (inc. GST)
19000	Kanga XH Range 2100 Rotary Cutter c/w Galvanised Deck and Dual Wheels	2100 6'-11"	2334 7'-8"	855	17368		
19500	Kanga XH Range 2100 Rotary Cutter c/w Galvanised Deck	2100 6'-11"	2334 7'-8"	725	17368		
20000	Kanga XH Range 1800 Rotary Cutter c/w Galvanised Deck and Single Wheel	1800 5'-11"	2034 6'-8"	695	19557		
20500	Kanga XH Range 1800 Rotary Cutter c/w Galvanised Deck	1800 5'-11"	2034 6'-8"	630	19557		

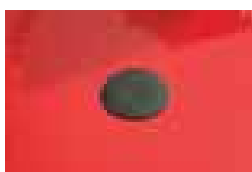
Code	Description	Weight (kg)	RRP (exc. GST)	RRP (inc. GST)
100.134	Kanga Stepped Slasher Blades (pair)			
100.135	Kanga Round Back Rotary Cutter Bolt Kit (set of nuts, bolts and bushes)			
100.136	Kanga Old Square Design Slasher Bolt Kit (set of nuts, bolts and bushes). Suit Slashers Pre-2008.			
100.170	Kanga High Tensile Bisalloy Four (4) Blade Disc Rotor (suit 2100 H/XH Cutters)	200		
100.180	Kanga High Tensile Bisalloy Four (4) Blade Disc Rotor (suit 1800 H/XH Cutters)	140		

# H Range Rotary Cutter

<b>Deck Material</b>	5mm, fully welded top with 10mm side walls
<b>Deck Profile</b>	Folded, "clean top" design with rounded back
<b>Deck Reinforcing</b>	32x16mm full sub-frame
<b>Gearbox</b>	130hp (540rpm) 1:1.92 (1800mm) or 1:1.467 (2100mm) ratio with 20 spline input shaft
<b>PTO Shaft</b>	Series 8 (106hp/79kw), triangular profile tube and safety covers with patent lever release
<b>Clutch</b>	100hp, 4 plate, 200mm (8") safety clutch
<b>Finish</b>	Powder coated baked enamel
<b>Tower</b>	Multi-mount, 90x16mm, double clevis, floating
<b>Tower Offset</b>	Positive locking multi-mount (centre mount with 200mm (8") left or right offset)
<b>Tower Chain</b>	13mm T80 rated chain. (Max. load 4500kg)
<b>Skids</b>	Adjustable skid (65 - 145mm) with 8mm wall and 16mm runner
<b>Cutter Bar</b>	130mm spring steel, bolt together with drive lugs and counter sunk blade bolts
<b>Blades</b>	Hardened carbon/chrome (spring steel) stepped down, twisted with replaceable hardened bush
<b>Linkage/Mounting</b>	Double clevis, category 2 linkage with pins and clips
<b>Front and Rear Chains</b>	10mm front and rear safety chain with wire rope replacement system



Multi mount tower



Blade bolt inspection cap



Blade exclusion zones



Waterproof manual holder



Countersunk blade bolts

Code	Description	Cutting Width	Overall Width	Weight (kg)	Tip Speed (ft/min)	RRP (exc. GST)	RRP (inc. GST)
21500	Kanga H Range 2100 Rotary Cutter	2100 6'-11"	2334 7'-8"	705	17368		
22000	Kanga H Range 1800 Rotary Cutter	1800 5'-11"	2034 6'-8"	610	19557		

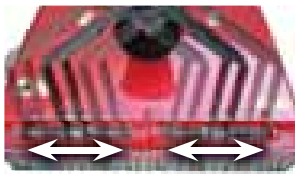
Code	Description	Weight (kg)	RRP (exc. GST)	RRP (inc. GST)
25600	Kanga XH/H/M Range Rotary Cutter Single Depth Wheel	65		
25700	Kanga XH/H/M Range Rotary Cutter Dual Depth Wheels	130		
25860	Hot Dip Galvanising of 1800 Rotary Cutter Deck*			
25870	Hot Dip Galvanising of 2100 Rotary Cutter Deck*			
100.134	Kanga Stepped Slasher Blades (pair)			
100.135	Kanga Round Back Rotary Cutter Bolt Kit (set of nuts, bolts and bushes)			
100.136	Kanga Old Square Design Slasher Bolt Kit (set of nuts, bolts and bushes). Suit Slashers Pre-2008.			
100.170	Kanga High Tensile Bisalloy Four (4) Blade Disc Rotor (suit 2100 H/XH Cutters)	200		
100.180	Kanga High Tensile Bisalloy Four (4) Blade Disc Rotor (suit 1800 H/XH Cutters)	140		

\* Galvanising will add approximately 1% to the overall weight of the Rotary Cutter

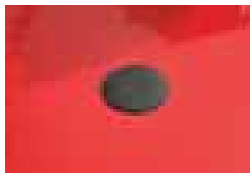
# M Range Rotary Cutter



<b>Deck Material</b>	4mm, fully welded top with 8mm side walls
<b>Deck Profile</b>	Folded, "clean top" design with rounded back
<b>Deck Reinforcing</b>	32x12mm full sub-frame
<b>Gearbox</b>	75hp (540rpm) 1:1.93 (1500 and 1800mm) or 1:1.46 (2100mm) ratio with 6 spline input shaft
<b>PTO Shaft</b>	Series 6 (64hp/48kw), triangular profile tube and safety covers with patent lever release
<b>Clutch</b>	200mm (8") 2 plate safety clutch
<b>Finish</b>	Powder coated baked enamel
<b>Tower</b>	Multi-mount, 75x16mm, double clevis, floating
<b>Tower Offset</b>	Positive locking multi-mount (centre mount with 200mm (8") left or right offset)
<b>Tower Chain</b>	13mm T80 rated chain. (Max. load 4500kg)
<b>Skids</b>	Adjustable skid (35-125mm) with 6mm wall and 12mm runner
<b>Cutter Bar</b>	100mm bolt together with drive lugs and counter sunk blade bolts
<b>Blades</b>	Hardened carbon/chrome (spring steel) stepped down, twisted with replaceable hardened bush
<b>Linkage/Mounting</b>	Double clevis, category 1 and 2 lower linkage with category 2 pins and clips
<b>Front and Rear Chains</b>	8mm front and rear safety chain with wire rope replacement system



Multi mount tower



Blade bolt inspection cap



Blade exclusion zones



Waterproof manual holder



Countersunk blade bolts

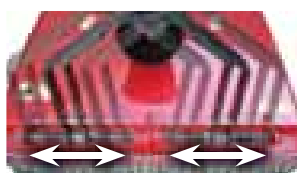
Code	Description	Cutting Width	Overall Width	Weight (kg)	Tip Speed (ft/min)	RRP (exc. GST)	RRP (inc. GST)
25000	Kanga M Range 2100 Rotary Cutter	2100 6'-11"	2310 7'-7"	530	17368		
26000	Kanga M Range 1800 Rotary Cutter	1800 5'-11"	2010 6'-7"	490	19557		
27000	Kanga M Range 1500 Rotary Cutter	1500 4'-11"	1710 5'-8"	390	16399		

Code	Description	Weight (kg)	RRP (exc. GST)	RRP (inc. GST)
25600	Kanga XH/H/M Range Rotary Cutter Single Depth Wheel	67		
25700	Kanga XH/H/M Range Rotary Cutter Dual Depth Wheels	134		
25850	Hot Dip Galvanising of 1500 Rotary Cutter Deck*			
25860	Hot Dip Galvanising of 1800 Rotary Cutter Deck*			
25870	Hot Dip Galvanising of 2100 Rotary Cutter Deck*			
100.134	Kanga Stepped Slasher Blades (pair)			
100.135	Kanga Round Back Rotary Cutter Bolt Kit (set of nuts, bolts and bushes)			
100.136	Kanga Old Square Design Slasher Bolt Kit (set of nuts, bolts and bushes). Suit Slashers Pre-2008.			

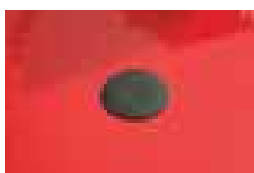
\* Galvanising will add approximately 1% to the overall weight of the Rotary Cutter

# S Range Rotary Cutter

<b>Deck Material</b>	3mm, fully welded top with 6mm side walls
<b>Deck Profile</b>	Folded, "clean top" design with rounded back
<b>Deck Reinforcing</b>	25x12mm full sub-frame
<b>Gearbox</b>	40hp (540rpm) 1:1.93 ratio with 6 spline input shaft
<b>PTO Shaft</b>	Series 4 (35hp/26kw), triangular profile tube and Safety covers with patent lever release
<b>Clutch</b>	150mm (6") 2 plate safety clutch
<b>Finish</b>	Powder coated baked enamel
<b>Tower</b>	Multi-mount, 75x12mm, double clevis, floating
<b>Tower Offset</b>	Positive locking multi-mount (centre mount with 200mm (8") left or right offset)
<b>Tower Chain</b>	10mm T80 rated chain. (Max. load 3000kg)
<b>Skids</b>	Adjustable skid (35-125mm) with 6mm wall and 12mm runner
<b>Cutter Bar</b>	100mm bolt together with drive lugs and counter sunk blade bolts
<b>Blades</b>	Hardened carbon/chrome (spring steel) stepped down, twisted with replaceable hardened bush
<b>Linkage/Mounting</b>	Double clevis, category 1 and 2 lower linkage with category 1 pins and clips
<b>Front and Rear Chains</b>	6mm front and rear safety chain with wire rope replacement system



Multi mount tower



Blade bolt inspection cap



Blade exclusion zones



Waterproof manual holder



Countersunk blade bolts

Code	Description	Cutting Width	Overall Width	Weight (kg)	Tip Speed (ft/min)	RRP (exc. GST)	RRP (inc. GST)
29000	Kanga S Range 1500 Rotary Cutter	1500 4'-11"	1710 5'-8"	300	16399		
30000	Kanga S Range 1350 Rotary Cutter	1350 4'-5"	1556 5'-1"	280	14759		
31000	Kanga S Range 1200 Rotary Cutter	1200 3'-11"	1410 4'-8"	250	13119		

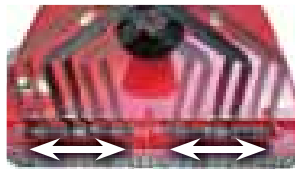
Code	Description	Weight (kg)	RRP (exc. GST)	RRP (inc. GST)
32200	Kanga S Range Rotary Cutter Single Depth Wheel	56		
25850	Hot Dip Galvanising of 1500 Rotary Cutter Deck*			
25860	Hot Dip Galvanising of 1350 Rotary Cutter Deck*			
100.134	Kanga Stepped Slasher Blades (pair)			
100.135	Kanga Round Back Rotary Cutter Bolt Kit (set of nuts, bolts and bushes)			
100.136	Kanga Old Square Design Slasher Bolt Kit (set of nuts, bolts and bushes). Suit Slashers Pre-2008.			

\* Galvanising will add approximately 1% to the overall weight of the Rotary Cutter

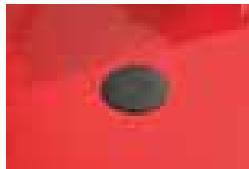
## Mini Range Rotary Cutter



<b>Deck Material</b>	2.5mm, fully welded top with 5mm side walls
<b>Deck Profile</b>	Folded, "clean top" design with square back
<b>Deck Reinforcing</b>	25x8mm full sub-frame
<b>Gearbox</b>	50hp (540rpm) 1:2.83 ratio with 6 spline input shaft
<b>PTO Shaft</b>	Series 4 (35hp/26kw), triangular profile tube and safety covers with patent lever release
<b>Clutch</b>	150mm (6") 2 plate safety clutch
<b>Finish</b>	Powder coated baked enamel
<b>Tower</b>	Multi-mount, 65x10mm, double clevis, floating
<b>Tower Offset</b>	Positive locking multi-mount (centre mount with 150mm (6") left or right offset)
<b>Tower Chain</b>	8mm T80 rated chain. (Max. load 2000kg)
<b>Skids</b>	Adjustable skid (20-110mm) with 6mm wall and 10mm runner
<b>Cutter Bar</b>	90mm bolt together with cuphead blade bolts
<b>Blades</b>	8mm stepped down hardened carbon/chrome (spring steel) with replaceable hardened bush
<b>Linkage/Mounting</b>	Double clevis, category 1 lower linkage with category 1 pins and clips
<b>Front and Rear Chains</b>	6mm front and rear safety chain with wire rope replacement system



Multi mount tower



Blade bolt inspection cap



Waterproof manual holder

Code	Description	Cutting Width	Overall Width	Weight (kg)	Tip Speed (ft/min)	RRP (exc. GST)	RRP (inc. GST)
32750	Kanga Mini Range 1200 Rotary Cutter	1200 3'-11"	1375 4'-6"	205	19203		
32850	Kanga Mini Range 1000 Rotary Cutter	1000 3'-4"	1175 3'-11"	180	16803		

Code	Description	RRP (exc. GST)	RRP (inc. GST)
100.411	Kanga Mini Stepped Slasher Blades (pair)		
100.412	Kanga Mini Range Rotary Cutter Bolt Kit (set of nuts, "Plough" bolts and bushes)		
100.413	Kanga Mini Slasher Bolt Kit (set of nuts, M16 bolts and bushes). Suit Slashers Pre-2008.		

## XH Range Grader Blade

<b>Headstock Material</b>	150x150x9mm RHS, fully welded and reinforced
<b>Mouldboard</b>	10mm reinforced and gusseted with 20mm turntables
<b>Movement Via</b>	100mm (4") hydraulic rams complete with hoses and fittings
<b>Cutting Edge</b>	150mm heat hardened carbon/chrome (spring steel) reversible
<b>Finish</b>	High build oxide primer with high quality equipment enamel top coat
<b>Linkage/Mounting</b>	Double clevis category 2 lower linkage with pins and clips
<b>Offset</b>	Variable - Up to 20° left and right
<b>Tilt</b>	Variable - Up to 30° left and right
<b>Angle</b>	Variable - Up to 30° left and right

Code	Description	Weight (kg)	Tractor (hp)	RRP (exc. GST)	RRP (inc. GST)
47000	Kanga 2400 (8'-0") XH Range, 3 Ram Hydraulic Grader Blade	615	90 - 130		
47200	Kanga 3000 (10'-0") XH Range, 3 Ram Hydraulic Grader Blade	795	90 - 130		



## H Range Grader Blade

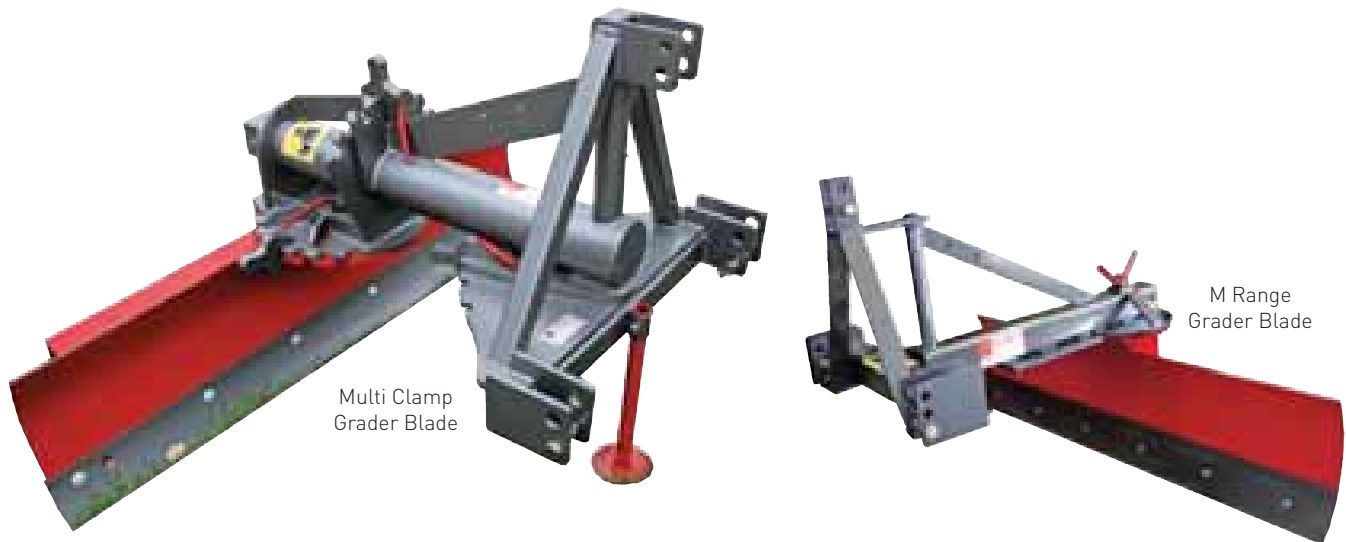
<b>Headstock Material</b>	150x150x5mm RHS, fully welded and reinforced
<b>Mouldboard</b>	8mm reinforced and gusseted with 16mm turntables
<b>Movement Via</b>	75mm (3") hydraulic rams complete with hoses and fittings or manual adjustment
<b>Cutting Edge</b>	150mm heat hardened carbon/chrome (spring steel) reversible
<b>Finish</b>	High build oxide primer with high quality equipment enamel top coat
<b>Linkage/Mounting</b>	Double clevis category 2 lower linkage with pins and clips
<b>Offset</b>	Variable - up to 20° left and right
<b>Tilt</b>	Variable - up to 30° left and right
<b>Angle</b>	Variable - up to 30° left and right

Code	Description	Weight (kg)	Tractor (hp)	RRP (exc. GST)	RRP (inc. GST)
47300	Kanga 2400 (8'-0") H Range, 3 Ram Hydraulic Grader Blade	530	50 - 90		
47350	Kanga 2400 (8'-0") H Range, Manual Adjustment Grader Blade	515	50 - 90		
47400	Kanga 1800 (6'-0") H Range, 3 Ram Hydraulic Grader Blade	500	50 - 90		
47450	Kanga 1800 (6'-0") H Range, Manual Adjustment Grader Blade	485	50 - 90		
48100	Kanga Manual Depth Wheel suit XH/H Range Grader Blades				
48200	Kanga Hydraulic Depth Wheel suit XH/H Range Grader Blades				

# Multi Clamp Grader Blade

<b>Headstock Material</b>	Fully welded and reinforced pipe and RHS construction
<b>Mouldboard</b>	Pressed 8mm mouldboard with channel reinforcing
<b>Movement Via</b>	Locking wedges (dog clamps)
<b>Cutting Edge</b>	150mm heat hardened carbon/chrome (spring steel) reversible
<b>Finish</b>	High build oxide primer with high quality equipment enamel top coat
<b>Linkage/Mounting</b>	Double clevis category 1 and 2 linkage with category 1 pins and clips
<b>Offset</b>	0-45° in 5° increments left or right
<b>Tilt</b>	0-45° in 5° increments left or right
<b>Angle</b>	0-45° in 5° increments left or right

Code	Description	Weight (kg)	Tractor (hp)	RRP (exc. GST)	RRP (inc. GST)
40000	Kanga 2400 (8'-0") Multi ("DOG") Clamp Grader Blade	385	40 - 70		
41000	Kanga 1800 (6'-0") Multi ("DOG") Clamp Grader Blade	345	35 - 60		
46500	Kanga M Range/Multi Clamp Grader Blade Depth Wheel				



# M Range Grader Blade

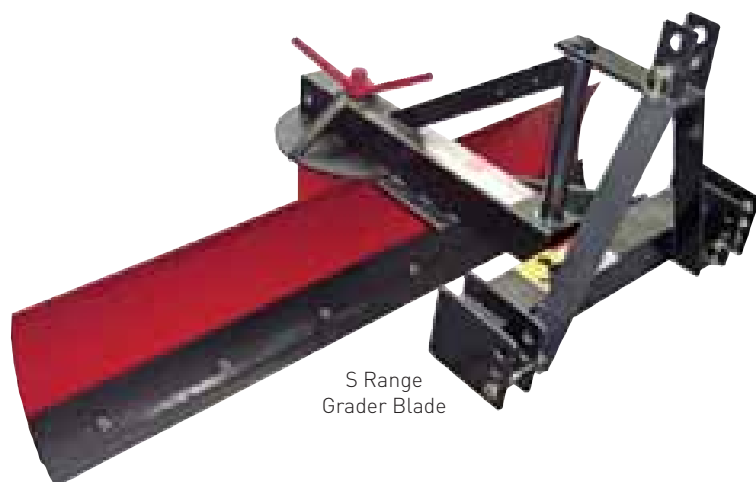
<b>Headstock Material</b>	Welded, reinforced 100x100x6mm RHS
<b>Mouldboard</b>	Pressed 8mm mouldboard with channel reinforcing and 16mm turn tables
<b>Cutting Edge</b>	150mm heat hardened carbon/chrome (spring steel) reversible
<b>Finish</b>	Powder coated baked enamel
<b>Linkage/Mounting</b>	Category 1 and 2 top. Category 1 lower. Both double clevis and supplied with category 1 pins and clips
<b>Offset</b>	5 positions left and right
<b>Tilt</b>	Using lower linkage pin holes and tractor linkage arms
<b>Angle</b>	28 positions over 360°

Code	Description	Weight (kg)	Tractor (hp)	RRP (exc. GST)	RRP (inc. GST)
43000	Kanga 1800 (6'-0") M Range Grader Blade	286	30 - 50		
46500	Kanga M Range/Multi Clamp Grader Blade Depth Wheel				

## S Range Grader Blade

<b>Headstock Material</b>	Welded, reinforced 100x100 x4mm RHS
<b>Mouldboard</b>	Pressed 6mm mouldboard with channel reinforcing and 12mm turn tables
<b>Cutting Edge</b>	150mm heat hardened carbon/chrome (spring steel) reversible
<b>Finish</b>	Powder coated baked enamel
<b>Linkage/Mounting</b>	Category 1 and 2 top. Category 1 lower. Both double clevis and supplied with category 1 pins and clips
<b>Offset</b>	3 positions left and right
<b>Tilt</b>	Using lower linkage pin holes and tractor linkage arms
<b>Angle</b>	28 positions over 360°

Code	Description	Weight (kg)	Tractor (hp)	RRP (exc. GST)	RRP (inc. GST)
44000	Kanga 1800 (6'-0") S Range Grader Blade	229	18 - 35		
46000	Kanga S Range Grader Blade Depth Wheel				



S Range  
Grader Blade



Mini Range Adjustable Grader Blade

## Mini Range Grader Blade

<b>Headstock Material</b>	Welded, reinforced 80x80x4mm RHS
<b>Mouldboard</b>	Pressed 6mm mouldboard with channel reinforcing and 10mm turn table
<b>Cutting Edge</b>	150mm heat hardened carbon/chrome (spring steel) reversible
<b>Finish</b>	Powder coated baked enamel
<b>Linkage/Mounting</b>	Double clevis category 1. Supplied with category 1 pins and clips
<b>Offset</b>	3 positions left and right
<b>Tilt</b>	Using lower linkage pin holes and tractor linkage arms
<b>Angle</b>	28 positions over 360°

Code	Description	Weight (kg)	Tractor (hp)	RRP (exc. GST)	RRP (inc. GST)
45000	Kanga 1200 (4'-0") Mini Range Adjustable Grader Blade	122	18 - 30		
45900	Kanga 1200mm Grader Blade Depth Wheel				

## XH Range Post Hole Digger

### Profile

Heavy duty RHS in a dual rail configuration

### A Frame

Heavy duty RHS with shear bolts

### Gearbox

50hp (3.18:1) or 75hp (4:1)

With 6 spline input shaft

### PTO Shaft

Series 4 (35hp/26kw), triangular profile tube and safety covers with patent lever release

### Clutch

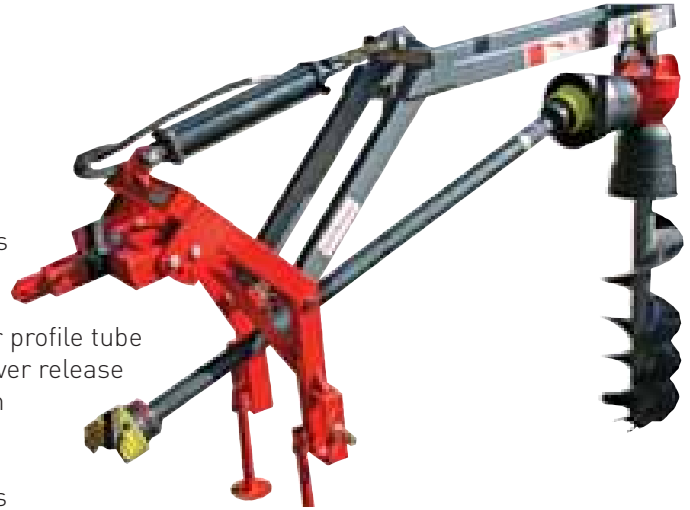
200mm (8") 2 plate safety clutch

### Finish

Powder coated baked enamel

### Hydraulics

65mm (2.5") hydraulic ram complete with hoses and fittings



Code	Description	Weight (kg)	Tractor (hp)	RRP (exc. GST)	RRP (inc. GST)
55000	Kanga 75hp XH Range Post Hole Digger, less Auger	210.5	50+		
56000	Kanga 50hp XH Range Post Hole Digger, less Auger	206.4	40+		

## Post Hole Digger Augers

### Profile

Agricultural augers suit all ranges of Kanga post hole diggers

### Construction

Heavy duty 50mm tubing with 6mm flighting

### Cutting Head

Clockwise double cut with replaceable teeth and pilot

### Height

1200mm (48")

### Finish

High build oxide primer with high quality equipment enamel top coat



Code	Description	Weight (kg)	RRP (exc. GST)	RRP (inc. GST)
50700	Kanga 100mm (4") Auger Only	13.5		
50600	Kanga 150mm (6") Auger Only	14.5		
50500	Kanga 228mm (9") Auger Only	19.5		
50400	Kanga 300mm (12") Auger Only	24.5		
50300	Kanga 380mm (15") Auger Only*	27.2		
50200	Kanga 457mm (18") Auger Only*	34.5		
50100	Kanga 610mm (24") Auger Only*	60.5		

\* Not to be used on Kanga Mini Range Post Hole Diggers.

Code	Description	RRP (exc. GST)	RRP (inc. GST)
140.900	Kanga Standard Dirt Tooth (pair)		
140.901	Kanga Chisel Dirt Tooth (pair)		
140.906	Kanga Clockwise Auger Pilot (SB23 or SB30). <b>Please specify on order.</b>		
140.909	Kanga Clockwise 100mm (4") Combined Auger Pilot and Digging Head		

## H Range Post Hole Digger

<b>Boom Profile</b>	Traditional right angle frame from 100x100x6mm RHS
<b>A Frame Profile</b>	Traditional double clevis "A" frame manufactured from 12mm flat bar
<b>Gearbox</b>	75hp [4:1] with 6 spline input shaft
<b>PTO Shaft</b>	Series 4 (35hp/26kw), triangular profile tube and safety covers with patent lever release
<b>Clutch</b>	200mm [8"] 2 plate safety clutch
<b>Finish</b>	Powder coated baked enamel
<b>Augers</b>	Sizes from 100mm [4"] to 610mm [24"]. <b>Refer page 10</b>

Code	Description	Weight (kg)	Tractor (hp)	RRP (exc. GST)	RRP (inc. GST)
50000	Kanga 75hp H Range Post Hole Digger, less Auger	159.2	40+		

## M Range Post Hole Digger

<b>Boom Profile</b>	Traditional right angle frame from 100x100x6mm RHS
<b>A frame Profile</b>	Traditional double clevis "A" frame manufactured from 12mm flat bar
<b>Gearbox</b>	50hp [3.18:1] with 6 spline input shaft
<b>PTO Shaft</b>	Series 4 (35hp/26kw), triangular profile tube and safety covers with patent lever release
<b>Clutch</b>	150mm [6"] 2 plate safety clutch
<b>Finish</b>	Powder coated baked enamel
<b>Augers</b>	Sizes from 100mm [4"] to 610mm [24"]. <b>Refer page 10</b>

Code	Description	Weight (kg)	Tractor (hp)	RRP (exc. GST)	RRP (inc. GST)
51000	Kanga 50hp M Range Post Hole Digger, less Auger	133.6	30 - 75		

## Mini Range Post Hole Digger

<b>Boom Profile</b>	Traditional right angle frame from 80x80x4mm RHS
<b>A Frame Profile</b>	Traditional double clevis "A" frame manufactured from 12mm flat bar
<b>Gearbox</b>	35hp [2.92:1] With 6 spline input shaft
<b>PTO Shaft</b>	Series 4 (35hp/26kw), triangular profile tube and safety covers with patent lever release
<b>Clutch</b>	150mm [6"] 2 plate safety clutch
<b>Finish</b>	Powder coated baked enamel
<b>Augers</b>	Sizes from 100mm [4"] to a maximum 300mm [12"]. <b>Refer page 10</b>



Code	Description	Weight (kg)	Tractor (hp)	RRP (exc. GST)	RRP (inc. GST)
52000	Kanga 30hp Mini Range Post Hole Digger, less Auger	96.1	15 - 35		

## H Range 3 Tine Ripper

<b>Profile</b>	Fully welded 150x150x9mm tool bar
<b>Linkage/Mounting</b>	Double clevis category 2 linkage complete with pins and clip
<b>Tines</b>	Heavy duty 150 x 32mm, chamfered edged, adjustable tine
<b>Tine Point</b>	Heat hardened carbon/chrome (spring steel) reversible point
<b>Finish</b>	Powder coated baked enamel
<b>Max. Working Depth</b>	915mm (3'-0")
<b>Width</b>	2000mm (6'-7")

Code	Description	Weight (kg)	Tractor (hp)	RRP (exc. GST)	RRP (inc. GST)
10000	Kanga H Range 3 Tine Ripper	285	65 - 90		
160.100	Kanga Ripper Point				
160.101	Kanga Ripper Point Bolt Set				



## M Range 3 Tine Ripper

<b>Profile</b>	Fully welded 100x100x5 RHS tool bar
<b>Linkage/Mounting</b>	Double clevis category 1 linkage complete with pins and clip
<b>Tines</b>	Heavy duty 130 x 25mm, chamfered edged, adjustable tine
<b>Tine Point</b>	Heat hardened carbon/chrome (spring steel) reversible point
<b>Finish</b>	Powder coated baked enamel
<b>Max. Working Depth</b>	550mm (1'-10")
<b>Width</b>	950mm (3'-2")

Code	Description	Weight (kg)	Tractor (hp)	RRP (exc. GST)	RRP (inc. GST)
11000	Kanga M Range 3 Tine Ripper	112	25 - 45		
160.100	Kanga Ripper Point				
160.101	Kanga Ripper Point Bolt Set				

## H Range Single Tine Ripper

<b>Profile</b>	Fully welded, double gusseted heavy duty RHS
<b>Linkage/Mounting</b>	Double clevis category 1 and 2 complete with pins and clip
<b>Tine</b>	150 x 32mm, chamfered edged
<b>Tine Point</b>	Heat hardened carbon/chrome (spring steel) reversible point
<b>Finish</b>	Powder coated baked enamel
<b>Max. Working Depth</b>	650mm [2'-2"]
<b>Width</b>	850mm [2'-9"]

All Single Tine Rippers can be fitted with optional Pipelayer



Code	Description	Weight (kg)	Tractor (hp)	RRP (exc. GST)	RRP (inc. GST)
12000	Kanga H Range Single Tine Ripper	86	35 - 80		
14000	Kanga Pipelayer (suit H/M Range Single Tine Rippers)		n/a		
160.100	Kanga Ripper Point				
160.101	Kanga Ripper Point Bolt Set				

## M Range Single Tine Ripper

<b>Profile</b>	Fully welded, gusseted, RHS
<b>Linkage/Mounting</b>	Double clevis category 1 linkage complete with pins and clip
<b>Tines</b>	150 x 32mm
<b>Tine Point</b>	Heat hardened carbon/chrome (spring steel) reversible point
<b>Finish</b>	Powder coated baked enamel
<b>Max. Working Depth</b>	500mm [1'-8"]
<b>Width</b>	800mm [2'-7"]

All Single Tine Rippers can be fitted with optional Pipelayer



Code	Description	Weight (kg)	Tractor (hp)	RRP (exc. GST)	RRP (inc. GST)
12100	Kanga M Range Single Tine Ripper	68	25 - 50		
160.100	Kanga Ripper Point				
160.101	Kanga Ripper Point Bolt Set				

## MINI Range Single Tine Ripper

<b>Profile</b>	Fully welded, gusseted, RHS
<b>Linkage/Mounting</b>	Double clevis category 1 linkage complete with pins and clip
<b>Tines</b>	130 x 25mm, chamfered edged
<b>Tine Point</b>	Heat hardened carbon/chrome (spring steel) reversible point
<b>Finish</b>	Powder coated baked enamel
<b>Max. Working Depth</b>	350mm [1'-2"]
<b>Width</b>	625mm [2'-1"]

All Single Tine Rippers can be fitted with optional Pipelayer



Code	Description	Weight (kg)	Tractor (hp)	RRP (exc. GST)	RRP (inc. GST)
13000	Kanga Mini Range Single Tine Ripper	38	12 - 25		
14500	Kanga Mini Range Pipelayer		n/a		
160.100	Kanga Ripper Point				
160.101	Kanga Ripper Point Bolt Set				

## Box Scraper

<b>Profile</b>	Fully welded rigid box blade with boxed tool bar
<b>Mould Board</b>	430mm high with thickness of 4mm (1.2m), 5mm (1.8m) or 8mm (2.4m)
<b>Type of Tines</b>	High tensile height adjustable
<b>Cutting Edge</b>	2 x 150mm heat hardened carbon/chrome (spring steel)
<b>Finish</b>	Powder coated baked enamel
<b>Linkage/Mounting</b>	Category 1 bolt on lower linkage pins and clip

Code	Description	Overall Width	No. of Tines	Weight (kg)	Tractor (hp)	RRP (exc. GST)	RRP (inc. GST)
48500	Kanga 2.4m (8'-0") Box Scraper	2440mm	8	290	30 - 50		
49000	Kanga 1.8m (6'-0") Box Scraper	1830mm	6	205	25 - 35		
49500	Kanga 1.2m (4'-0") Box Scraper	1230mm	4	150	15 - 30		



## Stick Rake

<b>Profile</b>	Fully welded rigid RHS tool bar. The 1.8m and 2.4m are 50x50x4 RHS, while the 3.0m frame uses both 75x50x4 and 50x50x4 RHS
<b>Linkage/Mounting</b>	Double clevis, category 1 lower linkage with category 1 lower link pins and clips
<b>Type of Tines</b>	10mm x 32mm high tensile "S" tine with 390mm ground clearance
<b>Tine Point</b>	High tensile reversible point
<b>Tine Spacing</b>	Point to point, approx. 140mm

Code	Description	Tractor (hp)	RRP (exc. GST)	RRP (inc. GST)
60100	Kanga 1800 (6'-0") Fixed Stick Rake complete with 13 Tines	15 - 30		
60200	Kanga 2400 (8'-0") Fixed Stick Rake complete with 17 Tines	25 - 40		
60300	Kanga 3000 (10'-0") Fixed Stick Rake complete with 21 Tines	35 - 60		

# Tipping Box Carryall



With back removed



With back removed



## Overview

Boxed tipping carryall for light general purpose duties. Removing the rear door converts the implement into tipping carryall. Heat hardened carbon leading edge.

## Profile

Reinforced plate with heavy duty tipping mechanism

## Finish

Powder coated baked enamel

## Bucket Material

**100 model** = 3.5mm plate

**140 model** = 4mm plate

**180 model** = 6mm plate

## Linkage

**100 model** = category 1

**140 model** = category 1

**180 model** = category 1 and 2

Code	Description	W x H x D (cm)	Max. load (kg)	Weight (kg)	Tractor (hp)	RRP (exc. GST)	RRP (inc. GST)
99100	Kanga 1.0m Tipping Box Carryall	100 x 71 x 37	400	127 (113*)	15 - 30		
99200	Kanga 1.4m Tipping Box Carryall	140 x 82 x 43	500	195 (172*)	25 - 50		
99300	Kanga 1.8m Tipping Box Carryall	180 x 87 x 51	800	342 (300*)	40 - 80		

\* Weight when rear door has been removed

# Hydraulic Transport Box



## Overview

Hydraulically operated transport box/tipping carryall for general purpose duties

## Profile

Solid robust construction with reinforcing at all stress points. Inner ribs reinforce the bucket floor and there is a double acting ram with heavy duty tipping mechanism. Removing the rear door converts the implement into tipping carryall. Heat hardened carbon leading edge.

## Finish

Powder coated baked enamel

## Bucket Material

**120 model** = 3.5mm plate

**160 model** = 5mm plate

**200 model** = 6mm plate

## Linkage

**120 model** = category 1

**160 model** = category 1 and 2

**200 model** = category 1 and 2

Code	Description	W x H x D (cm)	Max. load (kg)	Weight (kg)	Tractor (hp)	RRP (exc. GST)	RRP (inc. GST)
99450	Kanga 1.2m Hydraulic Transport Box	120 x 71 x 37	500	167 (150*)	18 - 40		
99550	Kanga 1.6m Hydraulic Transport Box	160 x 82 x 46	700	324 (287*)	35 - 60		
99650	Kanga 2.0m Hydraulic Transport Box	200 x 87 x 51	800	387 (340*)	50 - 100		

\* Weight when rear door has been removed

## Wood Floor Carryall

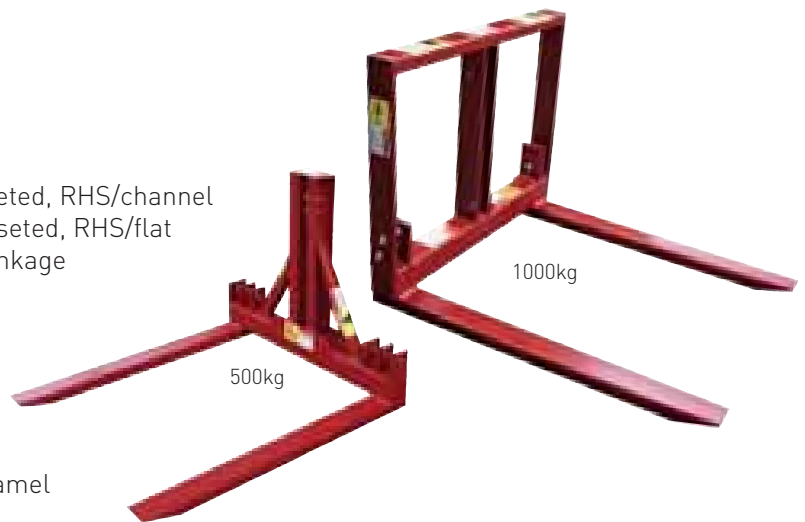
<b>Profile</b>	Welded heavy duty RHS/angle frame
<b>Linkage/Mounting</b>	Category 1 bolt on lower linkage pins and clip
<b>Wood Floor</b>	25mm hardwood
<b>Finish</b>	Powered coated baked enamel



Code	Description	Weight (kg)	RRP (exc. GST)	RRP (inc. GST)
98000	Kanga 1200 x 915 (4' x 3') Wood Floor Carryall	53		
98500	Kanga 1500 x 1065 (5' x 3'6") Wood Floor Carryall	68		
99000	Kanga 1800 x 1065 (6' x 3'6") Wood Floor Carryall	85		

## Pallet Fork

<b>Profile</b>	500kg - fully welded, gusseted, RHS/channel 1000kg - fully welded, gusseted, RHS/flat
<b>Linkage/Mounting</b>	Double clevis category 1 linkage with pins and clip
<b>Forks</b>	500kg - 100x50x5 RHS 1000kg - 100x50x6 RHS
<b>Fork Width</b>	500kg - 990mm (3'-3") 1000kg - 1020mm (3'-4")
<b>Load Rating</b>	Tested to 5 times capacity
<b>Finish</b>	Powered coated baked enamel



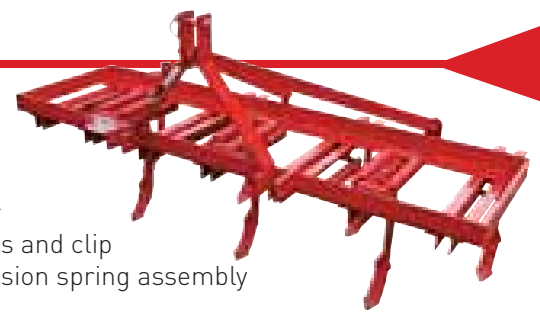
Code	Description	Weight (kg)	RRP (exc. GST)	RRP (inc. GST)
97000	Kanga 500kg Fixed Pallet Fork	80		
97500	Kanga 1000kg Fixed Pallet Fork	100		

## Jib Crane

<b>Profile</b>	Fully welded and reinforced 100x100x5mm RHS frame
<b>Linkage/Mounting</b>	Traditional double clevis "A" frame manufactured from 12mm flat bar
<b>No. Lift Points</b>	Two (2)
<b>Finish</b>	Powder coated baked enamel



Code	Description	Weight (kg)	RRP (exc. GST)	RRP (inc. GST)
96000	Kanga H Range Jib Crane	68		



## Spring Release Eurotiller

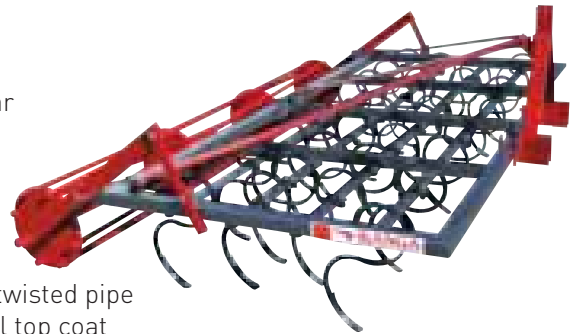
<b>Profile</b>	Welded 8mm folded section with flat bar tower
<b>Linkage/Mounting</b>	Double clevis category 1 and 2 linkage with pins and clip
<b>Type of Tine</b>	Drop forged carbon tine with double 12mm tension spring assembly
<b>Point</b>	High tensile carbon reversible
<b>Max. Working Depth</b>	350mm (1'-2")
<b>Finish</b>	High build primer and equipment enamel top coat

Code	Description	Overall Width*	Tractor (hp)	RRP (exc. GST)	RRP (inc. GST)
70000	Kanga 5 Tine Eurotiller	2.0m (6' 7")	25 - 35		
71000	Kanga 7 Tine Eurotiller	2.0m (6' 7")	35 - 50		
72000	Kanga 9 Tine Eurotiller	3.0m (9' 10")	45 - 65		
73000	Kanga 11 Tine Eurotiller	3.0m (9' 10")	55 - 80		

\* Working width is 100mm (4") less than Overall Width.

## S Tine Cultivator

<b>Profile</b>	Heavy duty RHS (5mm) and 16mm flat bar
<b>Linkage/Mounting</b>	Double clevis category 1 and 2 linkage complete with category 1 pins and clip
<b>Type of Tine</b>	10mm x 32mm high tensile "S" tine with 390mm ground clearance
<b>Point</b>	High tensile reversible point
<b>Roller</b>	Height adjustable, hubbed and stubbed, twisted pipe
<b>Finish</b>	High build primer and equipment enamel top coat

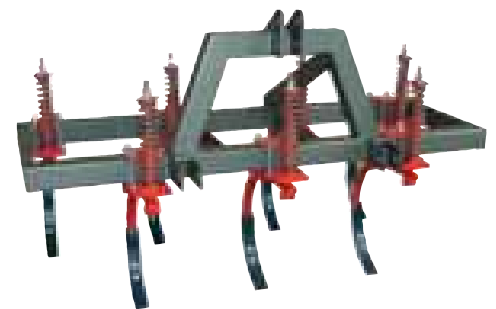


Code	Description	Overall Width**	Tractor (hp)	RRP (exc. GST)	RRP (inc. GST)
79000	Kanga 2400 S Tine (24 Tine) with Crumbler Roller	2.75m (6'-10")	25 - 50		
80000	Kanga 2800 S Tine (28 Tine) with Crumbler Roller	3.15m (9'-11")	30 - 60		
81000	Kanga 3000 S Tine (30 Tine) with Crumbler Roller	3.35m (11'-0")	40 - 80		
82000	Kanga 3200 S Tine (32 Tine) with Crumbler Roller	3.55m (11'-8")	50+		
83000	Dual Height Control Wheels suit Kanga S Tine Cultivator				

\*\* Working Width (including roller) is 350mm (1' 2") less than Overall Width.

## Stump Jump Chisel Plough

<b>Profile</b>	Fully welded/reinforced 100x100x5mm RHS frame
<b>Linkage/Mounting</b>	Double clevis category 2 linkage with pins and clip
<b>Type of Tine</b>	50x25mm high tensile with adjustable spacings
<b>Point</b>	Reversible, high tensile
<b>Springs</b>	12mm compression
<b>Max. Working Depth</b>	750mm (2'-6")
<b>Finish</b>	High build primer and equipment enamel top coat



Code	Description	Overall Width***	Tractor (hp)	RRP (exc. GST)	RRP (inc. GST)
75500	Kanga 5 Tine Stump Jump Chisel Plough	2.0m (6' 7")	40 - 55		
76000	Kanga 7 Tine Stump Jump Chisel Plough	2.0m (6' 7")	55 - 70		
76500	Kanga 9 Tine Stump Jump Chisel Plough	3.0m (9' 10")	70 - 90		
77000	Kanga 11 Tine Stump Jump Chisel Plough	3.0m (9' 10")	85 - 105		
77002	Dual Height Control Wheels suit Kanga Stump Jump Chisel Plough				

\*\*\* Working Width is 100mm (4") less than Overall Width. Optional wheels will add 400mm (1' 4") to Overall Width.

## Pasture Harrow

### Overview

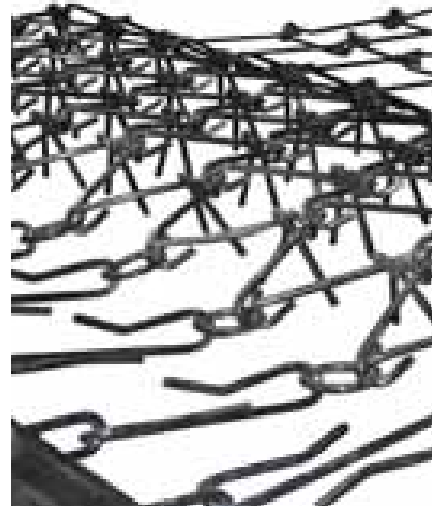
Kanga pasture harrows are designed to follow the contours of the ground without tangling. The "offset" scarifier section eliminates ridges, breaks up manure and opens the ground, stimulating new growth. The smudger section spreads the manure and can assist with ground leveling, while rear weights are used to keep the harrows on the ground.

### Materials

Channel draw bar. 12mm round for the harrows

### Finish

Powder coated baked enamel



Code	Description	Weight (kg)	RRP (exc. GST)	RRP (inc. GST)
90080	Kanga 2.4m (8'-0") Pasture Harrows	124		
90100	Kanga 3.0m (10'-0") Pasture Harrows	156		
90120	Kanga 3.6m (12'-0") Pasture Harrows	178		

## Pasture Harrow Rake

### Overview

Heavy duty folding harrows that connect to your tractors 3-point linkage. Ideal for breaking up hard ground, spreading manure and promoting new growth without the use of expensive fertilisers.

### Material

Heavy duty tube frame complete with cast iron scarifiers

### Linkage/Mounting

Category 1 (3-point linkage)

### Finish

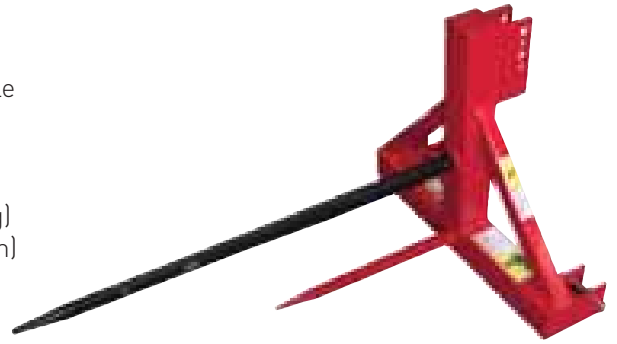
Powder coated baked enamel



Code	Description	Weight (kg)	RRP (exc. GST)	RRP (inc. GST)
90500	Kanga 4.0m (13'-0") Folding Harrow Rake	260		

## Bale Spike

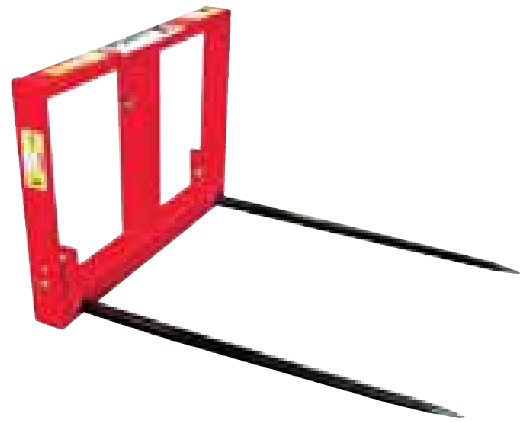
<b>Profile</b>	Heavy duty RHS frame with removeable conus 2 large spike
<b>Linkage/Mounting</b>	Double clevis category 1 linkage with category 1 pins and clip
<b>Type of Tine</b>	Small - high tensile (stop bale turning) Large - straight conus 2 tine (1240mm) with coned nut
<b>Finish</b>	Powder coated baked enamel



Code	Description	Weight (kg)	RRP (exc. GST)	RRP (inc. GST)
95000	Kanga Bale Spike	60		

## Silage Fork

<b>Profile</b>	Fully welded, gusseted, RHS/flat frame
<b>Linkage/Mounting</b>	Double clevis category 1 and 2 linkage with pins and clip
<b>Type of Tine</b>	Straight conus 2 tines (1240mm) with coned nut
<b>Finish</b>	Powder coated baked enamel



Code	Description	Weight (kg)	RRP (exc. GST)	RRP (inc. GST)
94000	Kanga Silage Fork	87		

## Adjustable Round Bale Feed Out Fork

<b>Profile</b>	Fully welded and reinforced heavy duty RHS
<b>Linkage/Mounting</b>	Double clevis category 1 linkage with category 1 pins and clip
<b>Type of Tine</b>	Reinforced 75x75x4 RHS, off set, adjustable
<b>Tine Adjustment</b>	Multiple positions between 1100 - 1700mm*
<b>Spikes</b>	Two (2) 50mm solid, tapered, locking
<b>Finish</b>	Powder coated baked enamel



\* Left and right tines are interchangeable and must be swapped to achieve full range of adjustment

Code	Description	Weight (kg)	RRP (exc. GST)	RRP (inc. GST)
93000	Kanga Adjustable Round Bale Feed Out Fork	96		

# Rotary Cutter or Pasture Topper - Twin Head



Pasture Topper

<b>Deck Material</b>	5mm, fully welded top with 10mm side walls
<b>Deck Profile</b>	Folded, "clean top" design with linkage reinforcement
<b>Deck Reinforcing</b>	Heavy duty channel main chassis with RHS reinforcing
<b>Finish</b>	High build oxide primer with high quality equipment enamel top coat
<b>Tower</b>	100x16mm, floating
<b>Tower Chain</b>	13mm high tensile chain. (Max. load 4500kg)
<b>Skids</b>	Adjustable skid (50-170mm) with 6mm wall and 12mm runner
<b>Cutter Bar</b>	100mm spring steel, bolt together with drive lugs
<b>Blades</b>	Hardened carbon/chrome (spring steel) stepped down, twisted left and right with hardened bush
<b>Linkage/Mounting</b>	Double clevis, category 2 lower linkage with category 2 pins and clips



Rotary Cutter

Model	Middle Gearbox	Outrigger Gearboxes (x2)	PTO Shaft	Clutch	Driveline System
75hp (540 PTO) Pasture Topper(s)	90hp "T" Box (1:1.5 Ratio)	75hp Right Angle (1:1.93 Ratio)	Series 6 (64hp/48kw)	75hp, 4 Plate Friction with "free wheel"	Spring Cushion Couplings
130hp (540 PTO) Pasture Topper	130hp "T" Box (1:1.33 Ratio)	130hp Right Angle (1:1.93 Ratio)	Series W2600 (120hp/90kw)	100hp, 4 Plate Friction with "free wheel"	Heavy Duty 20 Spline Spring Cushion Couplings
150hp (1000 PTO) Pasture Topper	130hp "T" Box (1:1.33 Ratio)	130hp Right Angle (1:1.1 Ratio)	Series W2600 (120hp/90kw)	100hp, 4 Plate Friction with "free wheel"	Heavy Duty 20 Spline Spring Cushion Couplings

Code	Description	Cutting Width	Overall Width	Tip Speed (ft/min)	RRP (exc. GST)	RRP (inc. GST)
33000	Kanga 2400 (8'-0") 75hp (540 PTO) Topper/Rotary Cutter	2300 7'-7"	2550 8'-5"	20839		
34000	Kanga 3000 (10'-0") 75hp (540 PTO) Topper/Rotary Cutter	2900 9'-7"	3150 10'-4"	24925		
34100	Kanga 3000 (10'-0") 130hp (540 PTO) Topper/Rotary Cutter	2900 9'-7"	3150 10'-4"	22019		
34150	Kanga 3000 (10'-0") 150hp (1000 PTO) Topper/Rotary Cutter	2900 9'-7"	3150 10'-4"	21242		

33001	Hot Dip Galvanising of 2400 (8'-0") Topper Deck					
33002	Hot Dip Galvanising of 3000 (10'-0") Topper Deck					
33003	Kanga Dual Depth Wheels with Ratchet Adjustment					
33004	Kanga Dual Depth Wheels with Hydraulic Ram, Hoes and Fittings					
220.086	Kanga Left Hand (anti-clockwise) "Orchard/Vineyard" Blade (price per blade).					
220.087	Kanga Right Hand (clockwise) "Orchard/Vineyard" Blade (price per blade).					
100.136	Kanga "Orchard/Vineyard" Bolt Kit (2 x nut, bolt and bush)					

# Rotary Cutter - Tri Head



Delving Deck  
with Draw Bar



Rigid Deck

<b>Deck Material</b>	5mm, fully welded top with 10mm side walls with angle/RHS/flat reinforcing
<b>Deck Profile</b>	Folded, "clean top" design with linkage reinforcement
<b>Gearboxes</b>	130hp cutter. 1 X 150hp four-way (1:1.93 ratio) and 2 x 150hp right angle (1:1 ratio)
<b>PTO Shaft</b>	130hp cutter. Series W2600 (120hp/90kw), star tube and safety covers with patent lever release
<b>Clutch</b>	130hp cutter. 150hp heavy duty 6 plate, 20 spline safety clutch with built in free-wheel
<b>Drive Line</b>	130hp cutter. Series 7 (75hp/56kw) 20 spline triangular tube PTO (safety covers with patent lever release) and heavy duty 20 spline spring cushion couplings
<b>Finish</b>	High build oxide primer with high quality equipment enamel top coat
<b>Tower</b>	Heavy duty 5mm RHS rigid tower and stays
<b>Skids</b>	Adjustable skid (50-170mm) with 6mm wall and 12mm runner
<b>Cutter Bar</b>	Bolt together with drive lugs
<b>Blades</b>	Hardened carbon/chrome (spring steel) stepped down, twisted left and right with hardened bush
<b>Linkage/Mounting</b>	Double clevis, category 2 lower linkage with category 2 pins and clips

Code	Description	Cutting Width	Overall Width	Tip Speed (ft/min)	RRP (exc. GST)	RRP (inc. GST)
34190R	Kanga 3600 (12'-0") Rigid Tri-Head Rotary Cutter	3500 11'-6"	3750 12'-4"	13102		
34200R	Kanga 4100 (13'-6") Rigid Tri-Head Rotary Cutter	4000 13'-2"	4250 14'-0"	14463		
34210R	Kanga 4500 (15'-0") Rigid Tri-Head Rotary Cutter	4400 14'-5"	4650 15'-3"	16100		
34190D	Kanga 3600 (12'-0") Delving Tri-Head Cutter	3500 11'-6"	3750 12'-4"	13102		
34200D	Kanga 4100 (13'-6") Delving Tri-Head Cutter	4000 13'-2"	4250 14'-0"	14463		
34210D	Kanga 4500 (15'-0") Delving Tri-Head Cutter	4400 14'-5"	4650 15'-3"	16100		
33005	Mulching Skids (2), limits cut material being discharged					
33010	Spring Steel Cutter Bars (3)					
33011	Hydraulic Option for Dual Depth Wheels					
33012	Draw Bar to convert machine to Tow Type					
220.086	Kanga Left Hand (anti-clockwise) "Orchard/Vineyard" Blade (price per blade).					
220.087	Kanga Right Hand (clockwise) "Orchard/Vineyard" Blade (price per blade).					
100.136	Kanga "Orchard/Vineyard" Bolt Kit (2 x nut, bolt and bush)					

## 50hp Orchard/Vineyard Rotary Cutter



### Deck Material

### Deck Profile

### Gearboxes

### PTO Shaft

### Clutch

### Drive Line

### Finish

### Tower

### Skids

### Cutter Bar

### Blades

### Linkage/Mounting

### Wheels

### Discharge

3mm, fully welded top with 10mm side walls with heavy duty angle and flat bar  
 Folded, "clean top" design with linkage reinforcement  
 1 x 50hp three-way (1:1.5 ratio) and 2 x 50hp right angle (1:2.83 ratio)  
 Series 6 (64hp/48kw), triangular tube and safety covers with patent lever release  
 200mm (8") 2 plate safety clutch  
 Nylon flexible couplings or spring couplings  
 High build oxide primer with high quality equipment enamel top coat  
 65x12mm, floating with 10mm high tensile chain stays. (Max. load 3000kg)  
 Adjustable skid (25-100mm) with 6mm wall and 12mm runner  
 Bolt together with drive lugs  
 Hardened carbon/chrome (spring steel) stepped down with hardened bush  
 Double clevis, category 1 lower linkage with category 1 pins and clips  
 Dual rear segmented rubber wheels with manual adjustment  
 Twin side discharge with skirting to aid discharge

Code	Description	Cutting Width	Overall Width	Tip Speed (ft/min)	RRP (exc. GST)	RRP (inc. GST)
39400	Kanga 1350 (4'-6") 50hp Light Duty Stirling	1300 4'-3"	1470 4'-10"	11237		
39500	Kanga 1500 (5'-0") 50hp Light Duty Stirling	1450 4'-9"	1560 5'-2"	12463		
39600	Kanga 1800 (6'-0") 50hp Light Duty Stirling	1780 5'-10"	1970 6'-6"	15119		
39700	Height Adjustable Rear Roller (in lieu of Dual Wheels)					
39800	Pair of Mulching Skids (full length skids to stop cut material being discharged)					
100.411	Kanga Mini Stepped Slasher Blades (pair)					
100.413	Kanga Mini Slasher Bolt Kit (2 x nuts, M16 bolts and bushes)					

# 75hp Orchard/Vineyard Rotary Cutter



<b>Deck Material</b>	5mm, fully welded top with 10mm side walls with heavy duty angle and flat bar
<b>Deck Profile</b>	Folded, "clean top" design with linkage reinforcement
<b>Gearboxes</b>	1 x 90hp three-way (1:1.5 ratio) and 2 x 75hp right angle (1:1.93 ratio)
<b>PTO Shaft</b>	Series 6 (64hp/48kw), triangular tube and safety covers with patent lever release
<b>Clutch</b>	200mm (8") 2 plate safety clutch
<b>Drive Line</b>	Heavy duty nylon flexible couplings or spring couplings
<b>Finish</b>	High build oxide primer with high quality equipment enamel top coat
<b>Tower</b>	Fully welded and reinforced 5mm RHS tower and stays
<b>Skids</b>	Adjustable skid (25-100mm) with 6mm wall and 12mm runner
<b>Cutter Bar</b>	Bolt together with drive lugs
<b>Blades</b>	Hardened carbon/chrome (spring steel) stepped down, twisted left and right with hardened bush
<b>Linkage/Mounting</b>	Double clevis, category 2 lower linkage with category 2 pins and clips
<b>Discharge</b>	Twin side discharge with skirting to aid discharge

Code	Description	Cutting Width	Overall Width	Tip Speed (ft/min)	RRP (exc. GST)	RRP (inc. GST)
38000	Kanga 1900 (6'-5") Rigid Stirling Rotary Cutter	1800 5'-11"	2050 6'-9"	16753		
38500	Kanga 2100 (7'-0") Rigid Stirling Rotary Cutter	2000 6'-7"	2250 7'-5"	18388		
39000	Kanga 2400 (8'-0") Rigid Stirling Rotary Cutter	2300 7'-7"	2550 8'-5"	20839		
33003	Kanga Dual Depth Wheels with Manual Adjustment					
33004	Kanga Dual Depth Wheels with Hydraulic Ram, Hoses and Fittings					
33005	2 x Mulching Skids (full length skids to stop cut material being discharged)					
33006	Dual Front Rollers (250mm Wide)					
33007	Single Rear Roller (500mm Wide) with Manual Adjustment					
33008	Single Rear Roller (500mm Wide) with Hydraulic Ram, Hoses and Fittings					
33009	2 x Spring Steel Cutter Bars (in lieu of standard cutter bars)					
220.086	Kanga Left Hand (anti-clockwise) "Orchard/Vineyard" Blade (price per blade).					
220.087	Kanga Right Hand (clockwise) "Orchard/Vineyard" Blade (price per blade).					
100.136	Kanga "Orchard/Vineyard" Bolt Kit (2 x nut, bolt and bush)					

# TB Series Flail Mower



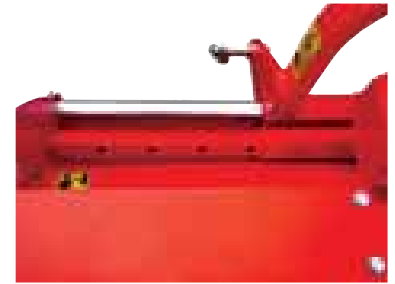
TB 110 (rear view)



TB110 (front/side view)



Rotor with optional Hammers



Positive locking multiple position offset

<b>Suited Applications</b>	Multi purpose machine suited to grassy applications and light undergrowth like bracken and blackberry bushes.
<b>Deck Material</b>	One piece 3mm, cold pressed formed and reinforced
<b>Gearbox</b>	High speed (540rpm)
<b>PTO Shaft</b>	Series 4 (35hp/26kw) triangular profile tube and safety covers
<b>Drive System</b>	Belt driven using three (3) "SPA" type belts
<b>Finish</b>	Premium quality agricultural enamel
<b>Skids</b>	Adjustable between 15 - 150mm (1/2" - 4")
<b>Wheels</b>	Full length roller with sealed bearings
<b>Linkage/Mounting</b>	Positive locking multi position tower, category 1
<b>Blades</b>	5mm carbon/chrome spring steel in "Y" shape
<b>Tip Speed</b>	30 m/s and/or 2080 rpm when PTO is at 540 rpm

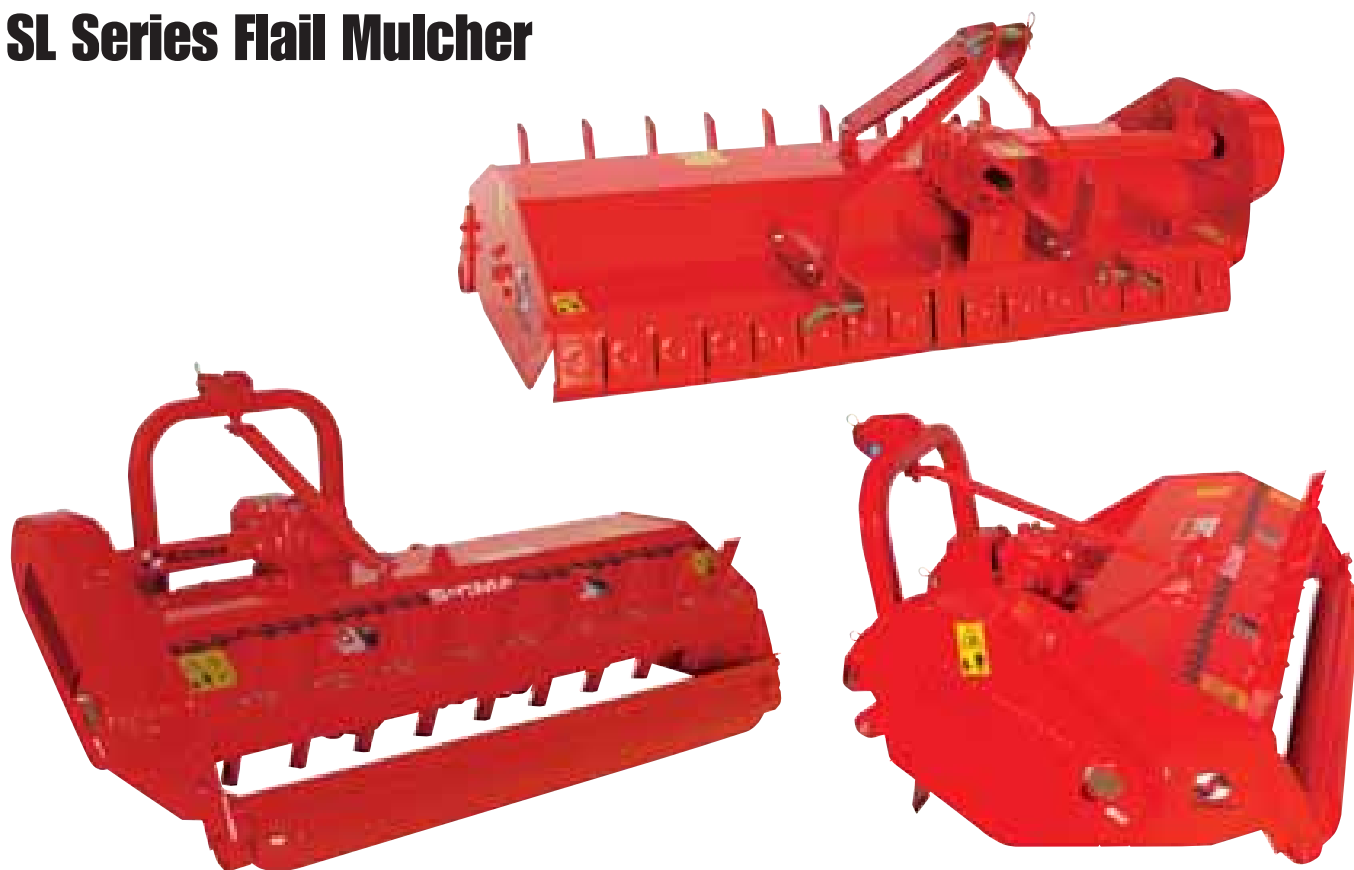
Mounting Measurements		
Model	Centered	Offset (max)
<b>TB 110</b>	430/670mm	730/370mm
<b>TB 125</b>	580/670mm	880/370mm

Measurements refer to distance left/right of centre

Code	Description	Cutting Width	Weight (kg)	No. of Blades	Tractor (hp)	RRP (exc. GST)	RRP (inc. GST)
40500	SICMA TB110 - 1.10m (43") Flail Mower	1100 43"	153	52 / 26	15 - 35		
41500	SICMA TB125 - 1.25m (50") Flail Mower	1250 50"	168	60 / 30	18 - 35		

S5815275	TB Series "Y" Blade						
S5535276	TB Series "Y" Blade Spacer						
S5715103	TB Series Hammer (optional)						

# SL Series Flail Mulcher



## Suited Applications

Multi purpose machine suited to grassy applications but capable of handling undergrowth and/or small vine prunings.

## Deck Material

One piece 5mm, cold pressed formed and reinforced

## Gearbox

High speed (540rpm)

## PTO Shaft

Series 4 (35hp/26kw) triangular profile tube and safety covers

## Drive System

Belt driven using two (2) "B" type belts

## Finish

Premium quality agricultural enamel

## Skids

Adjustable between 15 - 180mm (1/2" - 7")

## Roller

Full length roller with sealed bearings

## Linkage/Mounting

Dual position fixed mounted tower, category 1

## Blades

5mm carbon/chrome spring steel in "Y" shape

### Mounting Measurements

Model	Centered	Offset (max)
SL 125	650/635mm	900/385mm
SL 140	720/665mm	970/415mm

Measurements refer to distance left/right of centre

Code	Description	Cutting Width	Weight (kg)	No. of Blades	Tractor (hp)	RRP (exc. GST)	RRP (inc. GST)
42500	SICMA SL125 - 1.25m (50") Flail Mulcher	1250 50"	267	32 / 8	25 - 50		
43500	SICMA SL140 - 1.40m (55") Flail Mulcher	1400 55"	289	40 / 10	35 - 50		
S5816274	SL/TUF/TZF Series Flail "Y" Blade						
S5536128	SL Series "Y" Blade Spacer						
S5714130	SL Series Flail Hammer (optional)						

# TMX Series Flail Mulcher



Hammer option

## Suited Applications

Heavy duty, multi purpose machine suitable for cutting grass but designed for bushes, vineyard/orchard prunings and hazelnut groves.

## Deck Material

One piece 5mm, cold pressed formed and reinforced

## Gearbox

High speed (540rpm)

## PTO Shaft

Series 5 (54hp/42kw), triangular profile tube with safety covers

## Drive System

Belt driven using three (3) "BX" type belts

## Finish

Premium quality agricultural enamel

## Skids

Adjustable between 18 - 70mm ( $\frac{3}{4}$ " -  $2\frac{3}{4}$ " )

## Roller

Full length roller with self lubricating bearings

## Linkage/Mounting

Dual position fixed mounted tower, category 1 and 2

## Blades

6mm carbon/chrome spring steel in "Y" shape

### Mounting Measurements

Model	Centered	Offset (max)
TMX155	795/765mm	1215/485mm
TMX185	1095/765mm	1515/485mm

Measurements refer to distance left/right of centre

Code	Description	Cutting Width	Weight (kg)	No. of Blades	Tractor (hp)	RRP (exc. GST)	RRP (inc. GST)
52000	SICMA TMX155 - 1.55m (55") Flail Mulcher	1600 5'-3"	341	40 / 20	30 - 60		
53000	SICMA TMX185 - 1.85m (73") Flail Mulcher	1850 6'-1"	364	48 / 24	45 - 60		
S5815160	TMX Series Flail Mulcher "Y" Blade (standard)						
S5535710	TMX Series Flail Mulcher "Y" Blade Bush						
S5715100	TMX Series Flail Mulcher Hammer (optional)						

# TR Series Flail Mulcher



## Suited Applications

Multi purpose machine with hinged rear flap. Flap can be fixed open for easy extraction of grasses like straw and maize.

## Deck Material

Strong enough to handle vineyard and orchard prunings

## Gearbox

One piece 5mm, cold pressed formed and reinforced

## PTO Shaft

High speed (540/1000rpm) in oil bath with L1000 drive shaft

## Drive System

Series 6 (64hp/48kw), triangular tube and safety covers  
Belt driven using "SPB1550" belts. TR200 (4). TR255 (5)

## Finish

Premium quality agricultural enamel

## Skids

Adjustable between 32 - 95mm (1½" - 3¾")

## Roller

Full length roller with self lubricating bearings

## Linkage/Mounting

Dual position, fixed, double clevis, category 1 and 2

## Blades

6mm carbon/chrome spring steel in "Y" shape

### Mounting Measurements

Model	Centered	Offset (max)
TR200	1000/1000mm	1340/660mm
TR255	1275/1275mm	1615/935mm

Measurements refer to distance left/right of centre

Code	Description	Cutting Width	Weight (kg)	No. of Blades	Tractor (hp)	RRP (exc. GST)	RRP (inc. GST)
56000	SICMA TR 200 - 2.0m (79") Flail Mulcher	2000 6'-7"	688	44 / 22	60 - 90		
56500	SICMA TR 255 - 2.55m (100") Flail Mulcher	2550 8'-4"	832	56 / 28	75 - 90		

S5816618	TR Series Flail Mulcher "Y" Blade (standard)						
S5536541	TR Series Flail Mulcher "Y" Blade Bushing						
S5596542	TR Series Flail Mulcher "Y" Blade Spacer						
S5716648	TR Series Flail Mulcher Hammer (optional)						

## TUF Series Flail Mulcher



### Suited Applications

Heavy duty machine suitable for mulching large prunings thanks to a robust and compact design. Adjustable rear flap gives the option of mulching or the easy extraction of cut material.

### Deck Material

One piece 5mm, cold pressed formed and heavily reinforced

### Gearbox

High speed (540rpm) in oil bath with L800 drive shaft

### PTO Shaft

Series 6 (64hp/48kw), triangular tube and safety covers

### Drive System

Belt driven using three (3) "C-54" belts

### Finish

Premium quality agricultural enamel

### Roller

Full length roller with self lubricating bearings

### Linkage/Mounting

Multiple position, hydraulic offset, category 2

### Blades

Smooth, 150mm wide hammers  
(heavy duty carbon/chrome)

### Mounting Measurements

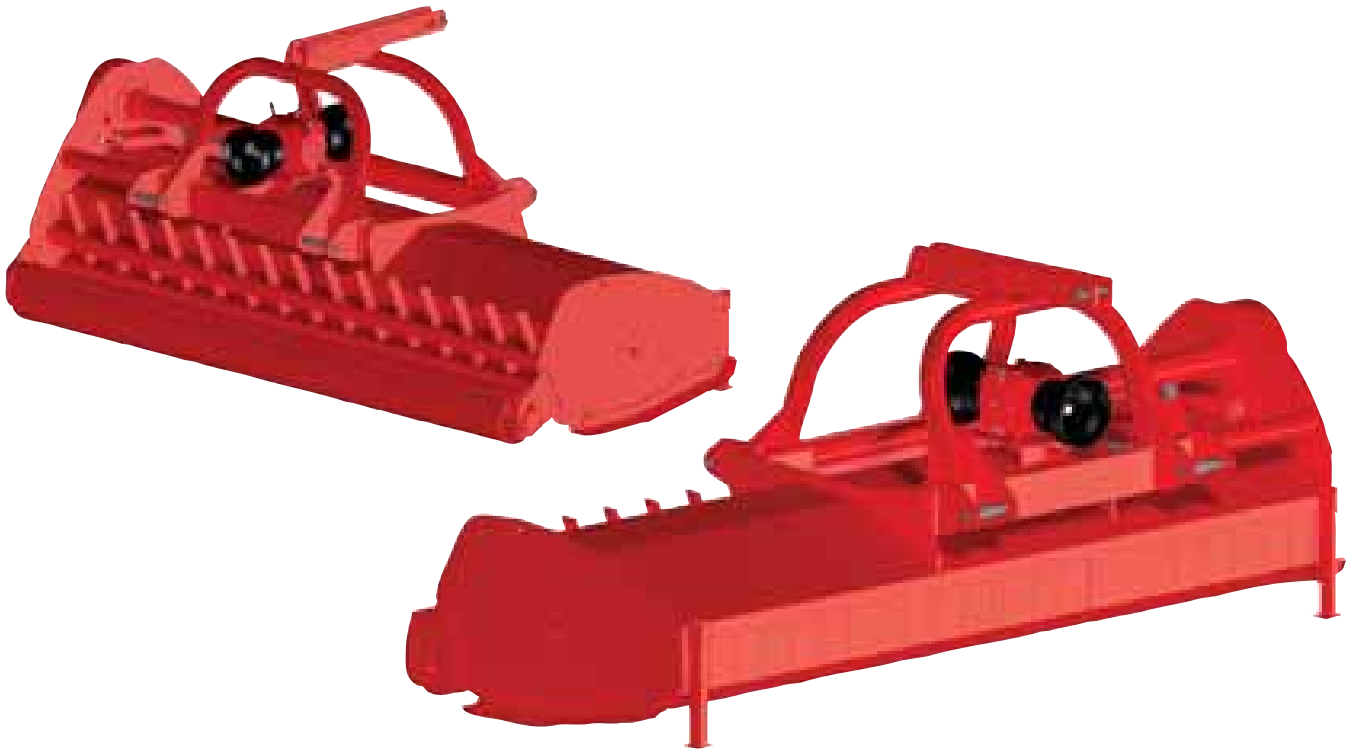
Model	Centered	Offset (max)
TUF180	900/900mm	1300/500mm

Measurements refer to distance left/right of centre

Code	Description	Cutting Width	Weight (kg)	No. of Blades	Tractor (hp)	RRP (exc. GST)	RRP (inc. GST)
55000	SICMA TUF 180 - 1.8m (71") Flail Mulcher	1800 5'-11"	605	14 / 42	60 - 90		

S5716270	TUF/TZF Series Smooth Hammer (standard)						
S5816274	SL/TUF/TZF Series Flail "Y" Blade (optional)						
S5816275	TUF/TZF Series "Y" Blade Spacer						

## TZF Series (Front/Rear) Flail Mulcher



### Suited Applications

Heavy duty reversible (front/rear mounted) machine with double 180° (540/1000) PTO and hydraulic side shift for tractors 60-90hp. Suitable for cutting grass and mulching large prunings thanks to a robust and compact design.

### Deck Material Gearbox

One piece 5mm, cold pressed formed and heavily reinforced High speed (540/1000rpm) with L1000 drive shaft and double free wheel

### PTO Shaft

Series 6 (64hp/48kw), triangular tube and safety covers

### Drive System Finish

Belt driven using four (4) "SPB" belts Premium quality agricultural enamel

### Roller

Full length roller with self lubricating bearings

### Linkage/Mounting Blades

Multiple position, hydraulic offset, category 2 Smooth 150mm wide hammers (heavy duty carbon/chrome)

### Mounting Measurements

Model	Centered	Offset (max)
<b>TZF 180</b>	820/980mm	1220/480mm
<b>TZF 220</b>	1265/980mm	1665/480mm
<b>TZF 250</b>	1520/980mm	1920/480mm

Measurements refer to distance left/right of centre

Code	Description	Cutting Width	Weight (kg)	No. of Blades	Tractor (hp)	RRP (exc. GST)	RRP (inc. GST)
57000	SICMA TZF 180 - 1.8m (71") Front/Rear FLAIL	1800 5'-11"	715	14 / 42	60 - 110		
57500	SICMA TZF 220 - 2.2m (87") Front/Rear FLAIL	2200 7'-3"	796	18 / 54	70 - 110		
58000	SICMA TZF 250 - 2.5m (98") Front/Rear FLAIL	2500 8'-3"	860	20 / 60	80 - 110		

S5716270	TZF Series Self Sharpening Smooth Hammer (standard)						
S5816274	SL/TUF/FB/TZF Series Flail "Y" Blade (optional)						
S5536275	TUF/TZF Series "Y" Blade Spacer						

## SA-K Series Rotary Hoe



### Overview

### Deck Material

### Gearbox

### PTO Shaft

### Drive System

### Finish

### Skids

### Linkage/Mounting

### Blades

### Working Depth

Light weight compact fixed machine for compact tractors 15 - 30hp

One piece 4mm, cold pressed formed with 5mm side plates

L700 drive shaft in oil bath

Series 4 (35hp/26kw), triangular profile tube with safety covers and 150mm (6") slip clutch

Side chain drive in oil bath

Premium quality agricultural enamel

Adjustable

Fixed, double clevis, category 1

6 per flange, curved carbon/chrome spring steel

150mm (6")

Code	Description	Working Width	Weight (kg)	No. of Blades	No. of Flange	Tractor (hp)	RRP (exc. GST)	RRP (inc. GST)
18100	SICMA SA-K 1000 - 1.0m (39") Rotary Hoe	1000 3'-3"	130	24	4	15 - 30		
18120	SICMA SA-K 1200 - 1.2m (47") Rotary Hoe	1200 3'-11"	145	30	5	20 - 30		
S4811786	SICMA SA-K Series Curved Blade (Left)							
S4811785	SICMA SA-K Series Curved Blade (Right)							

## ZLL/SB Series Rotary Hoe



### Overview

**ZLL series** - light weight machine with skids and anti-clog provisions for tractors 20-35hp.  
**SB series** - light weight compact machine with skids and anti-clog provisions for tractors 20-35hp with shift headstock for use in vineyard/orchards.

### Deck Material

### Gearbox

### PTO Shaft

One piece 3mm, cold pressed formed with 5mm side plates

L700 drive shaft in oil bath

Series 4 (35hp/26kw), triangular profile tube with safety covers and 150mm (6") slip clutch

Side chain drive in oil bath

### Drive System

### Finish

### Skids

### Linkage/Mounting

Premium quality agricultural enamel

Adjustable

**ZLL series** - fixed, double clevis, category 1

**SB series** - offsetting, double clevis, category 1

### Blades

### Working Depth

6 per flange, curved carbon/chrome spring steel  
 180mm (7")

### Mounting Measurements

Model	Left	Right
SB1200	600mm	600mm
SB1200	200mm	1000mm
SB1400	700mm	700mm
SB1400	200mm	1200mm

Code	Description	Working Width	Weight (kg)	No. of Blades	No. of Flange	Tractor (hp)	RRP (exc. GST)	RRP (inc. GST)
18508	SICMA ZLL80 - 0.8m (32") Rotary Hoe	800 2'-8"	135	18	3	15 - 35		
18520	SICMA SB120 - 1.2m (47") Rotary Hoe	1200 3'-11"	170	36	6	20 - 35		
18540	SICMA SB140 - 1.4m (55") Rotary Hoe	1400 4'-7"	180	42	7	25 - 35		
S4811282	SICMA ZLL/SB Series Curved Blade (Left)							
S4811281	SICMA ZLL/SB Series Curved Blade (Right)							

## CS Series Rotary Hoe



### Overview

### Deck Material

### Gearbox

### PTO Shaft

### Drive System

### Finish

### Skids

### Linkage/Mounting

### Blades

### Working Depth

Medium to heavy fixed machine with skids and anti-clog provisions for tractors 30-50hp

One piece 4mm, cold pressed formed with 6mm side plates

L750 drive shaft in oil bath

Series 5 (54hp/42kw), triangular profile tube with safety covers and 180mm (7") slip clutch

Side chain drive in oil bath

Premium quality agricultural enamel

Adjustable

Fixed, double clevis, category 1

6 per flange, curved carbon/chrome spring steel

180mm (7")

Code	Description	Working Width	Weight (kg)	No. of Blades	No. of Flange	Tractor (hp)	RRP (exc. GST)	RRP (inc. GST)
19000	SICMA CS135 - 1.35m (53") Rotary Hoe	1350 4'-5"	238	42	7	30 - 50		
19100	SICMA CS145 - 1.45m (57") Rotary Hoe	1450 4'-9"	246	42	7	35 - 50		
19200	Caroni CS165 - 1.65m (65") Rotary Hoe	1650 5'-5"	266	48	8	40 - 50		
S4811401	SICMA CS Series Curved Blade (Left)							
S4811400	SICMA CS Series Curved Blade (Right)							

# SMR Series Rotary Hoe



## Overview

### Deck Material

### PTO Shaft

### Gearbox

### Drive System

### Finish

### Skids

### Linkage/Mounting

### Blades

### Working Depth

Medium, fixed machine with skids and anti-clog provisions

One piece 4mm, cold pressed formed with load bearing frame and 8mm side plates

Series 5 (54hp/42kw), triangular profile tube with safety covers and 180mm (7") slip clutch

Single speed L800 drive shaft in oil bath

Side gear drive in oil bath, fixed to load bearing frame

Premium quality agricultural enamel

Adjustable

Fixed, double clevis, category 1 and 2

6 per flange, curved carbon/chrome spring steel

200mm (8")

Code	Description	Working Width	Weight (kg)	No. of Blades	No. of Flange	Tractor (hp)	RRP (exc. GST)	RRP (inc. GST)
25000	SICMA SMR160 - 1.60m (63") Rotary Hoe	1600 5'-3"	406	36	6	40 - 70		
26000	SICMA SMR185 - 1.85m (73") Rotary Hoe	1850 6'-1"	440	42	7	45 - 70		
27000	SICMA SMR210 - 2.10m (83") Rotary Hoe	2100 6'-11"	455	48	8	50 - 70		
S4818223	SICMA SMR Series Curved Blade (Left)							
S4818222	SICMA SMR Series Curved Blade (Right)							
S4818225	OPTIONAL SICMA SMR Series SQUARE Blade (Left)							
S4818224	OPTIONAL SICMA SMR Series SQUARE Blade (Right)							

# SPR Series Rotary Hoe



Optional Spiked Roller

## Overview

## Deck Material

## Gearbox

## PTO Shaft

## Drive System

## Finish

## Skids

## Linkage/Mounting

## Blades

## Working Depth

Heavy duty, fixed machine with 4+2 speed gearbox with 540/1000 PTO

One piece 4mm, cold pressed formed with load bearing frame and 8mm side plates

4+2 speed gearbox with L850 drive shaft in oil bath

Series 8 (96hp/71kw), triangular profile tube with safety covers and 200mm (8") 2 plate slip clutch

Side gear drive in oil bath, fixed to load bearing frame

Premium quality agricultural enamel

Adjustable

Fixed, centre mounted, double clevis, category 2

6 per flange, curved carbon/chrome spring steel

200mm (8")

Code	Description	Working Width	Weight (kg)	No. of Blades	No. of Flange	Tractor (hp)	RRP (exc. GST)	RRP (inc. GST)
28000	SICMA SPR185 - 1.85m (73") Rotary Hoe	1850 6'-1"	568	42	7	65 - 90		
28500	SICMA SPR210 - 2.10m (83") Rotary Hoe	2100 6'-11"	612	48	8	70 - 90		
29000	SICMA SPR235 - 2.35m (92") Rotary Hoe	2350 7'-9"	647	54	9	75 - 90		
S4814519	SICMA SPR Series Curved Blade (Left)							
S4814518	SICMA SPR Series Curved Blade (Right)							
S4814517	OPTIONAL SICMA SPR Series SQUARE Blade (Left)							
S4814516	OPTIONAL SICMA SPR Series SQUARE Blade (Right)							
S4005116	OPTIONAL "Spiked" Roller for SPR 185 (indent orders only)							
S4005117	OPTIONAL "Spiked" Roller for SPR 210 (indent orders only)							
S4005118	OPTIONAL "Spiked" Roller for SPR 235 (indent orders only)							
S8423095	OPTIONAL "Packer" Roller for SPR 210 (indent orders only)							
S8423096	OPTIONAL "Packer" Roller for SPR 235 (indent orders only)							
	Range of BEDFORMERS available							

## RG Series Rotary Hoe



RG with optional  
"Packer" Roller

### Overview

### Deck Material

### Gearbox

### PTO Shaft

### Drive System

### Finish

### Skids

### Linkage/Mounting

### Blades

### Working Depth

Heavy duty, fixed machine for tractors 90-160hp with 2+2 gear drive transmission  
 One piece 4mm, cold pressed formed with load bearing frame and 8mm side plates  
 2+2 speed lever operated gearbox  
 Series 8 (96hp/71kw), triangular profile tube with safety covers  
 and 200mm (8") 4 plate slip clutch  
 Side gear drive in oil bath, fixed to load bearing frame  
 Premium quality agricultural enamel  
 Adjustable  
 Fixed, centre mounted, double clevis, category 2  
 6 per flange, curved carbon/chrome spring steel  
 200mm (8")

Code	Description	Working Width	Weight (kg)	No. of Blades	No. of Flange	Tractor (hp)	RRP (exc. GST)	RRP (inc. GST)
30000	SICMA RG255 - 2.55m (100") Rotary Hoe	2550 8'-4"	970	60	10	90 - 160		
30500	SICMA RG305 - 3.05m (120") Rotary Hoe	3050 10'-0"	1032	72	12	90 - 160		
S4814005	SICMA RG Series Curved Blade (Left)							
S4814004	SICMA RG Series Curved Blade (Right)							
S4814003	OPTIONAL SICMA RG Series SQUARE Blade (Left)							
S4814002	OPTIONAL SICMA RG Series SQUARE Blade (Right)							
S8004176	OPTIONAL "Spiked" Roller for RG 255 (indent orders only)							
S8004178	OPTIONAL "Spiked" Roller for RG 305 (indent orders only)							
S8004025	OPTIONAL "Packer" Roller for RG 255 (indent orders only)							
S8004027	OPTIONAL "Packer" Roller for RG 305 (indent orders only)							
	Range of BEDFORMERS available							

# 3-PL Spinner Spreader



PL Series



Twin Side Discharge



Single Side Discharge



P Series

## Overview

### Spinner Disc

### Gearbox

### PTO Shaft

### Finish

### Linkage/Mounting

### Discharge

### Spreading Width

**P series** - single piece metal hopper with tube frame

**PL series** - single piece heavy duty PVC hopper with tube frame

Stainless steel spinner plate with 6 fins

Single speed 540rpm 1:1 ratio

Series 2 (21hp/16kw), triangular profile tube with safety covers

Premium quality agricultural enamel with epoxy varnish

Fixed category 1, bolt on pin

Side drop onto spinner fins for even distribution

Granular - 12 - 14m (39 - 46ft)

Powder - 6 - 7m (20 - 23ft)



P/PL Lime Agitator

Code	Description	Capacity		Height (mm)	Weight (kg)	RRP (exc.GST)	RRP (inc. GST)
		(lt)	(kg)				
60000	Cosmo P300 Spinner Spreader	260	335	1050	58		
61000	Cosmo P500 Spinner Spreader	345	450	1130	63		
61400	Cosmo PL 300 PVC Hopper Spinner Spreader	260	335	1050	53		
61500	Cosmo PL 500 PVC Hopper Spinner Spreader	345	450	1130	63		
P619.001	Cosmo P/PL Series Lime Agitator						
P620.002	Cosmo P/PL Series Single Side Distributor						
P620.043	Cosmo P/PL Series Twin Side Distributor						
P601.002	Cosmo P/PL Series Stainless Steel Veins (each)						
P605.005	Cosmo P/PL Series Stainless Steel Shutter Lever (Right)						
P605.006	Cosmo P/PL Series Stainless Steel Shutter Lever (Left)						

# Tow Type Spinner Spreaders



PTB560 Tow Type



PTP180 Tow Type

## Overview

**PTB** - single piece, low profile metal hopper with floatation tyres on a wide wheel base and a "dog-gear" to engage/disengage spinner plate.

**PTP** - heavy duty pvc hopper with tubular frame on floatation tyres.

## Spinner Disc

**PTB** - categoryaphoresis (anti-rust) coated disc with 6 fins

**PTP** - stainless steel spinner plate with 6 fins

## Gearbox

single speed ground drive 1:1 ratio

## Axle

**PTB** - 1830mm (72") outside to outside

**PTP** - 1050mm (41") outside to outside

## Wheels

**PTB** - 18" x 9.5" (460 X 240mm) floatation tyres

**PTP** - 16" x 6" (400 x 150mm) floatation tyres

## Finish

Premium quality agricultural enamel with epoxy varnish

## Discharge

**PTB** - manual cable operation with bottom drop onto spinner fins

**PTP** - manual split levers with lateral drop onto spinner fins

## Spreading Width

**PTB series.** 14 - 16m (46 - 52ft) @ 13km/h (8mph)

**PTP series.** 12 - 14m (39 - 46ft) @ 13km/h (8mph)

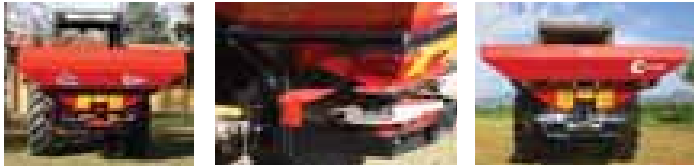


Covers now available for Tow Type Spreaders

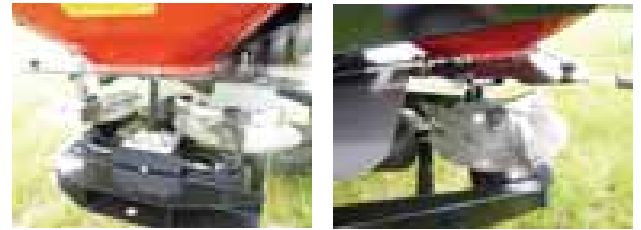
Code	Description	Capacity		Height (mm)	Weight (kg)	RRP (exc. GST)	RRP (inc. GST)
		(lt)	(kg)				
60300	Cosmo PTP180 Tow Type Spinner Spreader	165	213	1300	80		
60350	Cosmo PTP300 Tow Type Spinner Spreader	260	335	1440	84		
60400	Cosmo PTB430 Tow Type Spinner Spreader	320	400	1080	136		
60500	Cosmo PTB560 Tow Type Spinner Spreader	400	480	1300	139		
PTP902.001	Cosmo PTP 180 Hopper Cover						
PTP902.002	Cosmo PTP 300 Hopper Cover						
PTB902.005	Cosmo PTB 430 Hopper Cover						
PTB902.004	Cosmo PTB 560 Hopper Cover						

# Twin Spin Super Spreaders

## RX - 24m Double Disc Spreader



## RE - 18m Double Disc Spreader



### Overview

Twin spin machines with slow speed agitators, stainless steel components, hydraulic opening system and power take off (PTO) shaft.

### Hopper

Heavy duty square/rectangular profile hopper

### Gearbox

Three (3) gearboxes

### Linkage/Mounting

Fixed category 2 and 3

### Finish

Premium quality agricultural enamel with epoxy varnish

### Discharge

Opening opened/closed hydraulically

### Spreading Width

**RE series.** 12 - 18m (40 - 60ft)

**RX series.** 12 - 24m (40 - 80ft)

### Spreading Angle

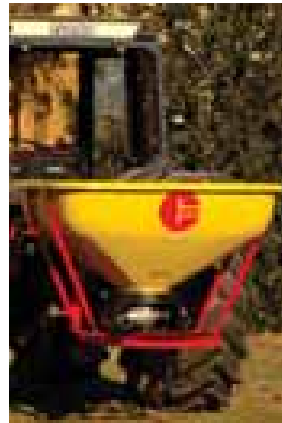
180° - 90°, left or right

### Spreading Discs

Stainless steel with different length fins to ensure full even spread

Code	Description	Dimensions			Weight (kg)	Capacity (lt)	RRP (exc. GST)	RRP (inc. GST)
		Width	Length	Height				
69000	Cosmo RE1000 Twin Spin 18m Fertiliser Spreader	1500	1350	1140	195	1000		
70000	Cosmo RX1100 Twin Spin 24m Fertiliser Spreader	1300	2300	1050	335	1100		
70500	Cosmo RX1600 Twin Spin 24m Fertiliser Spreader	1300	2300	1250	350	1600		
71000	Cosmo RX1900 Twin Spin 24m Fertilisers Spreader	1300	2300	1370	365	1900		

# Pendulum Super Spreader



**Overview**

Strong reinforced frame, traditional fibreglass hopper and a gearbox that allows an adjustable spreading width.

**Hopper**

Heavy duty fibreglass

**Gearbox**

New generation flywheel (1:1 ratio) that can be adjusted with a key

**Linkage/Mounting**

Fixed category 1

**Finish**

Premium quality agricultural enamel with epoxy varnish

**Discharge**

Manual (hydraulic option)

**Spreading Width**

0.75m - 15m (2½ - 50ft). Machine standard with 9-15m spout

Code	Description	Capacity		Height (mm)	Weight (kg)	RRP (exc. GST)	RRP (inc. GST)
		(lt)	(kg)				
76000	Cosmo PDV500 Pendulum Super Spreader	480	523	130	900		
77000	Cosmo PDV600 Pendulum Super Spreader	580	632	142	1000		
78000	Cosmo PDHV800 Pendulum Super Spreader	850	926	170	970		
79000	Cosmo PDHV1000 Pendulum Super Spreader	1050	1144	180	1070		
80000	Cosmo PDHV1250 Pendulum Super Spreader	1250	1360	195	1200		

81000	Road Trailer for PDV/PDHV Spreader						
PDV 619.026	PDV/PDHV Crown Lime Agitator						
PDV 619.008	PDV Hydraulic Opening System						
PDV 619.009	PDHV Hydraulic Opening System						
PDV 304.100	PDV/PDHV Spout - Standard (Full Coverage 9-15m)						
PDV 304.101	PDV/PDHV Spout - Narrow (Full Coverage 4-8m)						
PDV 304.102	PDV/PDHV Stainless Spout - Vineyard No.2 (Band Spreading 0.74-4.5m)						
PDV 304.103	PDV/PDHV Stainless Spout - Vineyard No.1 (Full Coverage 2-4m)						
PDV 304.105	PDV/PDHV Stainless Spout - Orchard (Band Spreading 2-10m)						
PDV 304.107	PDV/PDHV Stained Spout - Right Side Full Coverage (4-6m)						
PDV 304.108	PDV/PDHV Stained Spout - Left Side Full Coverage (4-6m)						
PDV 304.109	PDV/PDHV Spout End - Band spreading (Left or Right)						
PT611111	<b>PT Series</b> Crown Lime Agitator (PT models prior to 2008)						
PT304024	<b>PT Series</b> Spout - Standard Full Coverage (PT models prior to 2008)						



# Finishing Mower



FA2100



TC590



FA1500



TC910

## Suited Applications

Any grassy areas like paddocks, golf courses, parks and gardens, lawns, sports fields and road sides.

## Deck Material

One piece 5mm, cold pressed formed and reinforced

## Gearbox

High speed (540rpm) in oil bath

## PTO Shaft

Series 4 (35hp/26kw), triangular profile tube with safety covers

## Drive System

Belt driven using two (2) "B" type belts

## Finish

Premium quality agricultural enamel

## Cutting Height

Adjustable between 25 - 100mm (1" - 4")

## Wheels

Four (4), 360 degree spinning solid rubber wheels

## Linkage/Mounting

Floating, bolt on category 1 pins

## Blades

6mm carbon/chrome spring steel

## Tractor Power

12 - 60hp (1.2m = 12hp+, 1.5m = 18hp+, 1.8m = 25hp+, 2.1m = 30hp+, 2.35m = 35hp+)

Code	Description	Cutting Width	Overall Width	Weight (kg)	No. of Blades	Tip Speed (ft/min)	RRP (exc. GST)	RRP (inc. GST)
11000	Caroni SpA TC480 1.2m Side Discharge Mower	1220 48"	1500 59"	167	3	13615		
12000	Caroni SpA TC590 1.5m Side Discharge Mower	1500 59"	1780 70"	187	3	13776		
12000	Caroni SpA TC710 1.8m Side Discharge Mower	1800 71"	2070 82"	231	3	14015		
15000	Sicma FA1200 1.2m Rear Discharge Mower	1200 48"	1350 53"	178	3	13709		
15500	Sicma FA1500 1.5m Rear Discharge Mower	1500 60"	1625 64"	196	3	14082		
16000	Sicma FA1800 1.8m Rear Discharge Mower	1800 72"	1930 76"	214	3	14185		
16500	Sicma FA2100 2.1m Rear Discharge Mower	2110 84"	2235 88"	370	3	15243		
14000	Caroni SpA TC910 2.35m Rear Discharge Mower	2310 91"	2410 95"	286	5	13776		
480 077 00	TC480 - 1.2m Finishing Mower Blade.							
590 062 00	TC590 - 1.5m Finishing Mower Blade (suits TC910)							
710 010 00	TC710 - 1.8m Finishing Mower Blade.							
S5812701	FA 1200 - 1.2m Finishing Mower Blade.							
S5812702	FA 1500 - 1.5m Finishing Mower Blade.							
S5812703	FA 1800 - 1.8m Finishing Mower Blade.							
S5812707	FA 2100 - 2.1m Finishing Mower Blade.							

## 3-PL Cement Mixer



### Overview

Designed for, but not limited to, concrete preparation, this robust mixer can be used to mix fodder and various other tasks.

### Hopper/Cone

Large, open mouthed, 3mm rolled, with no welded seams 320 litre, 440mm (17.5") diameter

### Gearbox

Chain transmission drive system (10:1 reduction) in a steel housing

### Linkage/Mounting

Fixed, bolt on, category 1

### Finish

Premium quality agricultural enamel with epoxy varnish

### Discharge

18" x 1.5" hydraulic cylinder

### Width

860mm (34")

### Length

930mm (36.5")

### Height

950mm (37.5")

### Rotation

Min - 250rpm. Max. - 300rpm.

### Mixing Capacity

195 ltr = 0.2m<sup>3</sup> = 7 ft<sup>3</sup>



Code	Description	Hyd. Pressure		Weight (kg)	RRP (exc. GST)	RRP (inc. GST)
		min (atm)	max (atm)			
80600	Cosmo Mixer 80 - 320 Cement Mixer	50	140	100		

# Galfre Rotary Rake

Limited stocks available per season. Indent customers given priority.

## Overview

Galfre's driven finger wheel hay rakes come standard with fixed "3PL" and "articulated tandem wheels." They are designed to create perfect untangled windrows that are well aired and therefore easy to bale. The most up-to-date european technology means less stones/dirt end up in your fodder, which gives you a high quality and more nutritious feed.

## Operating Speed Tyres

14km / hr  
AG280/8 = 3.5 X 6  
AG350/10 = 15 x 6 - 6  
AG420/12 = 16 x 6.5 - 8

## Capacity (ha. /hr)

AG280/8 = 2.8  
AG350/10 = 3.2  
AG420/12 = 4.5

## PTO Requirements No. Rotors

540 rpm  
One (1)



Code	Description	No. Fingers	Working Width	Closed Width	Tractor HP	Weight (kg)	RRP (exc. GST)	RRP (inc. GST)
85000	Galfre AG280/8 Hay Rake with Tandem Wheels	8	2.8m 9'2"	1.2m 3'11"	20+	400		
85100	Galfre AG350/10 Hay Rake with Tandem Wheels	10	3.5m 11'6"	1.5m 4'11"	25+	600		
85200	Galfre AG420/12 Hay Rake with Tandem Wheels and Stabilizer	12	4.2m 13'10"	1.75m 5'9"	30+	680		

# Galfre Hay Mower

Limited stocks available per season. Indent customers given priority.

## Overview

The galfre hay mower has been designed with a very high tip speed to allow a perfect cut that keeps the material soft and well aired.

## Working Capacity

FR/D 165 = 1.3 - 1.7 ha. p/hr  
FR/D 210 = 1.7 - 2.3 ha. p/hr  
P-FR/D 245 = 2.5 - 2.7 ha. p/hr  
P-FR/D 285 = 2.7 - 3 ha. p/hr

## PTO Speed

540 rpm



Code	Description	Cutting Width	No. Discs	No. Blades	Tractor HP	Weight (kg)	RRP (exc. GST)	RRP (inc. GST)
90000	Galfre FR/D 165 Hay Mower	1.65m (5'5")	4	8	30+	340		
90100	Galfre FR/D 210 Hay Mower	2.1m (7'0")	5	10	40+	410		
90200	Galfre P-FR/D 245 Hay Mower	2.45m (8'2")	6	12	50+	490		
90300	Galfre P-FR/D 285 Hay Mower	2.85m (9'4")	7	14	60+	540		

# Galfre/Abbriata Mini Round Baler and Wrapper

Limited stocks available per season. Indent customers given priority.

## Mini round baler

### Overview

This mini round baler is ideal for mountainous terrain. It is the only baler on the market offering the option of a net or twine binding device (plus optional wrapper), it is perfect for anyone wanting to produce small, easy to handle bales.

### Bale Size

500 x 700mm (20" x 28")

### Bale Weight

18 - 25 kg (hay)

### Pick up Width

850mm (33.5")

### Machine Width

1300mm

### Machine Length

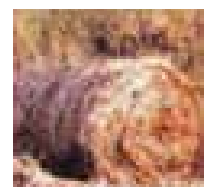
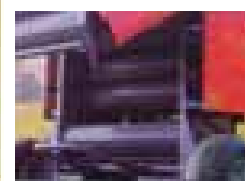
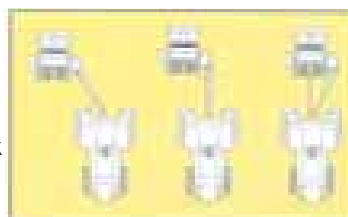
1500mm

### Machine Height

1800mm (opt. lateral draw bar)

### Standard Features

- Hydraulic tail gate with mechanical lock
- Automatic mono twine (or net) binding device with alarm tone
- Bale chute
- Double pick-up balancing
- Central drawbar or 3-point linkage
- PTO shaft
- Bale counter
- Adjustable pick-up wheel
- Side "star" shaped pick-up wheels



## Mini round bale wrapper

### Overview

Strong unit that will automatically wrap mini sized bales. Operator has the choice of 2, 4 or 6 wraps and machine will stop automatically after each bale has been wrapped. Machine will get approx. 50% stretch from the film.

### Film

Bobine film (25cm or 10" height)

### Wraps

Selector allows operator choice of - 2, 4 or 6

### Diamentions

Width 1300mm. Length 1500mm. Height 1300mm



Code	Description	Tractor HP	Weight (kg)	RRP (exc. GST)	RRP (inc. GST)
95000	Galfre Abbriata M50 Mini Round Baler	20+	380		
95500	Galfre Abbriata MF-70 Mini Round Bale Wrapper	20+	200		

	Central Draw Bar is standard but Customers can request 3-PL (ex Italy) at no extra charge				
	All options must be ordered and fitted to new machines (ex-Italy)				
	Lateral Draw Bar Kit. (Adds 110kg)				
	Independent Hydraulic Pump				
	Hydraulic Pick-Up Control				
	Electronic Net Binding Device				

# Galfre/Abbriata Mini Square Baler

Limited stocks available per season. Indent customers given priority.



## Overview

This mini square baler produces very compact bales of straw or hay. Equipped with automatic twin knitters, this unit is designed for, but not limited to, small compact tractors with low horsepower. They are extremely compact and versatile and ideal in mountainous terrain or in areas with difficult access.

### Bale Tie

Twine

### Bale Size

Chamber is 340 x 440mm (13" x 17")

### Bale Weight

Straw - 13 - 20 kg

Hay - 18 - 28 kg

### Bale Length

Variable (400 - 1300mm)

### Bale Capacity

3 - 9 p/min

### Plunger Strokes

85 - 90 p/min

### Tractor hp

28+

### Pick-Up Width

1050mm or 1400mm (extra cost for 1400mm)

### Machine Width

1800mm

### Machine Length

3950mm

### Machine Height

1350mm

### Standard Features

Front pick-up jack, bale counter, PTO shaft and 3rd support wheel



Code	Description	Weight (kg)	RRP (exc. GST)	RRP (inc. GST)
96000	Galfre Abbriata M60 Mini Square Baler	900		

Baler Options. (Options must be ordered and fitted to new machines (ex-Italy).

	1400mm Extra Wide Pick-Up			
	3rd Wheel			
	Hydraulic Pick-Up Control			
	Hydraulic Draw Bar Adjustment			
	Long Chute and rear trailer hitch			
	Wide Angle PTO Shaft			
	Pickup Wheel			
	Hand Brake			

# Galfre Vineyard and Orchard Weeders

Limited stocks available per season. Indent customers given priority.



## Overview

A new ecological and innovative solution for organic farmers. Weed your "kill strip" and between the trees or vines in one go.

	"Triplex" Side	"Triplex" Rear	Inter Row
<b>Machine Width</b>	3100mm	2150mm	1310mm
<b>Machine Depth</b>	2470mm	1730mm	1450mm
<b>"Weeder" Head with Adj. Electric Sensor</b>	Yes	Yes	Yes
<b>No. of Blades on "Weeder" Head</b>	3	3	3
<b>"Weeder" Head Angle</b>	Adjustable (hyd.)	Adjustable (hyd.)	Adjustable (hyd.)
<b>"Weeder" Head Working Width</b>	280mm	280mm	280m
<b>"Weeder" Head Working Depth</b>	0 - 100mm	0 - 100mm	0 - 100mm
<b>"Weeder" Head Operated by</b>	Hydraulics	Hydraulics	Hydraulic
<b>"Weeder" Head Lateral Movement</b>	0 - 280mm	0 - 280mm	0 - 280mm
<b>Lateral Movement Operated by</b>	Hydraulic Ram	Hydraulic Ram	Hydraulic Ram
<b>Operating Speed</b>	5 - 7 km / hr	5 - 7 km / hr	5 - 7 km / hr
<b>PTO Shaft</b>	Yes	Yes	No
<b>2nd "Weeder" for "Kill Strip"</b>	Yes	Yes	Yes
<b>2nd Type of "Weeder"</b>	Thatching Blades	Thatching Blades	Fixed "Weeder" Head
<b>No. of Bades on 2nd "Weeder" Head</b>	18	18	3
<b>2nd "Weeder" Working Width</b>	450mm	450mm	280mm
<b>2nd "Weeder" Working Depth</b>	100mm	100mm	100mm
<b>Heavy Duty Auger Type Soil/Bed Reformer</b>	Yes	Yes	No

Code	Description	Lower Linkage	Tractor hp	Weight (kg)	RRP (exc. GST)	RRP (inc. GST)
97000	Galfre "TRIPLEX" Weeder (Side Mounted)	Cat 2	40+	590		
97100	Galfre "TRIPLEX" Weeder (Rear Mounted)	Cat 2	40+	575		
97500	Galfre "INTER ROW" Weeder (Front or Rear Mounted)	Cat 1	25+	150		

## Manual Sweeper

### Overview

This outdoor manual sweeper can be utilised in a large range of applications. Twin column brushes pick up all reasonable materials and deposits them into a removeable hopper.

### Drive

Manual

### Hopper

Removable 40 litre capacity

### Speed

3-4 km / hr

### Sweep Area

2400 square metres p/hr (max)

### Height Adjustment

Manual, multiple positions

### Type of Brushes

2 x column brushes. 2 x front brushes

### Brush Width

800mm



Code	Description	Weight (kg)	RRP (exc. GST)	RRP (inc. GST)
98000	Caroni Manual Sweeper	11		

## Petrol Sweeper

### Overview

A self propelled petrol driven sweeper with a 5.5hp unleaded petrol engine. The orbital action quickly cleans roads, paths or other areas of litter and debris.

### Engine

5.5hp

### Start

Manual

### Operating Speed

2 - 5 km p/hr

### No. of Speeds

4 forward gears

### Sweep Area

3840 square metre p/hr (max.)

### Brush Width

800mm

### Tyres

14.5 - 6.0

### Brush Height

Adjustable via handle with lock

### Brush Material

Replaceable heavy duty nylon section

### Brush Angle

5 position adjustable (centre and 2 x left and 2 x right. max. 30 degrees)



Code	Description	Weight (kg)	RRP (exc. GST)	RRP (inc. GST)
98100	Caroni Petrol Driven Road/Path Sweeper	90		

98150	Front Catcher suit Petrol Sweeper			
98160	Replacement Brushes (complete set)			

## Leaf/Litter Vacuum



### Overview

This petrol leaf/litter vacuum has positive locking height adjustment at the intake and steel fan to mulch material. Perfectly balanced for turning and operation it makes removing leaves a breeze.

<b>Engine</b>	5.5hp unleaded petrol with manual start
<b>Sweep Area</b>	1445 square metre p/hr (max)
<b>Operating Speed</b>	2-3 km p/hr
<b>Intake Width</b>	730mm
<b>Intake Height</b>	Positive locking adjustable six (6) positions
<b>Impeller Fan</b>	330mm diameter, steel
<b>Tyres</b>	13 x 5.0-6
<b>Catcher Capacity</b>	1 cubic metre
<b>Catcher Material</b>	Heavy duty canvas bag with solid plastic bottom

Code	Description	Weight (kg)	RRP (exc. GST)	RRP (inc. GST)
98200	Caroni Petrol Vacuum	60		
98210	Replacement Bag			



[www.farmimplements.com.au](http://www.farmimplements.com.au)

**T: (03) 9706 5166 F: (03) 9706 5050**

