



# Petrol Sweeper

**SSG5580A/C**

**SSG65100A/C**

**SSG80120A/C**

**Operation Manual**



# Contents

1. Preparation	...	...	...	...	...	...	...	3
2. Safety Instructions	...	...	...	...	...	...	...	4
3. Installation	...	...	...	...	...	...	...	5
4. Operation	...	...	...	...	...	...	...	6
5. Maintenance	...	...	...	...	...	...	...	7
6. Warranty...	...	...	...	...	...	...	...	7
7. Key Technical Parameters	...	...	...	...	...	...	...	8
8. Trouble Shooting	...	...	...	...	...	...	...	8

## **\* Description\***



**Thank you for using our products. We hope you will spend many enjoyable hours using it. Please read through these instructions carefully. Learn all the controls and the correct use of the machine.**

### **1. Preparation**

#### **1.1 Purpose and Features**

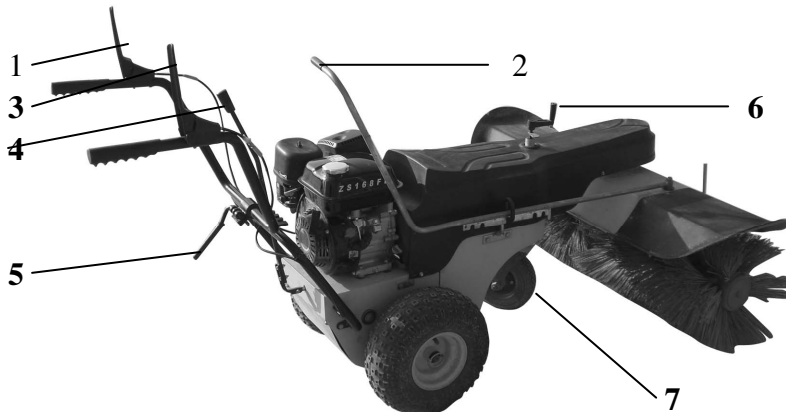
This sweeper is designed and built to sweep yards, roads, lanes and storehouses.

This sweeper is self-propelled which is working highly efficient and help the user save time and power. This unit is well designed, has excellent ergonomics, simple and convenient adjustment, and is comfortable to use during operation.

#### **Declaration:**

- A. The sweeper must only be used with original equipment and spares. Any use other than those here described is prohibited and will involve, in addition to cancellation of the warranty, serious risk for the operator and bystanders.**
- B. This company does not take any responsibility for the consequences arising from misuse of this unit. This company will not be responsible for any bodily injury or property loss on any third party arising from improper use of this unit.**
- C. Must abide by the relevant regulations of your country when operate this machine.**

#### **1.2 Introduction of the Main Parts:**



**1. Clutch on left handlebar**

**3. Clutch on right handlebar**

**5. Adjustment lever handle**

**7. Support wheel**

**2. Adjustment rider for brush direction**

**4. Speed control rider**

**6. Adjustment lever for support wheel**

## 2. Safety Instruction



**Before assembly and putting the machine into operation, please read carefully the operating instructions:**

1. Be thoroughly familiar with the controls and the proper use of the equipment. Know how to stop the unit and disengage the control quickly.
2. Never allow children or people unfamiliar with these instructions to operate the machine. Incorrect operation may result in bodily injury and damage to machine.
3. Never operate if people, especially children or pets are nearby
4. Do not run when pushing this unit, but walk at a normal speed while operating this machine.
5. Keep your body and clothes away from the heating or rotating parts of this unit. No loose clothes, neckties and necklaces are allowed when you operate this unit.
6. Inspect the working area of this unit completely and remove all obstacles.
7. Do not use this unit on a bumpy or steep road. Exercise caution to avoid slipping or falling, especially when operating in reverse.
8. Take care in operation, especially when crossing a road, to prevent accidents.
9. Inspect that all nuts, bolts and brush rollers are tight and well connected to ensure the safety and reliability of this unit prior to any operation.
10. Adjust the clutch pull cable to ensure it is flexible and reliable.
11. Adjust the brush to proper height prior to any operation.
12. If the unit strikes a foreign object or starts to vibrate abnormally, stop the engine and check immediately for the cause (this is very important!)
13. Stop the engine and pull out the spark plug whenever you leave the operating position, before making any repairs, adjustments, inspections or approaching running parts.
14. Inspect the air pressure in the tires prior to use and pay attention to sharp objects when using this unit to prevent the tire from being pierced.
15. Replace worn components for safety reasons prior to use.
16. Take care during the adjustment or maintenance of this unit to prevent any injury to your fingers.
17. Don't operate this machine without essential safety equipment (goggles, earplug and dust proof mask, etc.).
18. Inspect the fuel container before operating the machine; the fuel container must be full.

**Warning:** Gasoline is highly flammable.

- \* Use the approved fuel.
- \* Add fuel before starting engine. Never remove the cap of the fuel tank or add fuel to a running or hot engine.
- \* Refuel outdoors only and don't smoke while refueling.
- \* Screw the filler cap on securely and wipe up spilt petrol.
- \* Move machine at least 3m away from the refueling point before starting engine.
- \* Always store gasoline in a container approved for containing flammable liquids.

19. To reduce the risk of injury associated with exhaust fume inhalation, do not operate in unventilated area where dangerous carbon monoxide fumes can collect.
20. Except as provided for in the manufacturer's statement, no adjustment shall be done while the engine is running.
21. Since some parts of this unit are made of plastic or rubber materials, it should be kept away from any chemical articles, to prevent a chemical reaction from occurring.
22. Operate this unit only in daylight or good artificial light
23. Limit the number of piece of equipment used at any one time.
24. Don't use this device in the rain.

### 3. Installation

1. Turn the adjustment lever handle upward and the upper hand rail backward to a proper height. Then, press the adjustment lever handle downward.
2. Put the brush's adjusting handle into its fixed position (see Figure 1), then fix one end on the shell of brush by screw (see Figure 2).
3. Put the speed handle into speed spacing frame (see Figure 3), then fix the handle on the body of machine by screw (see Figure 4).

Figure 1

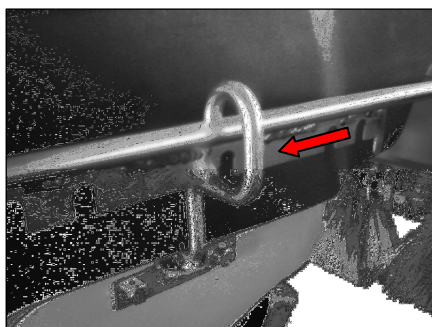


Figure 2

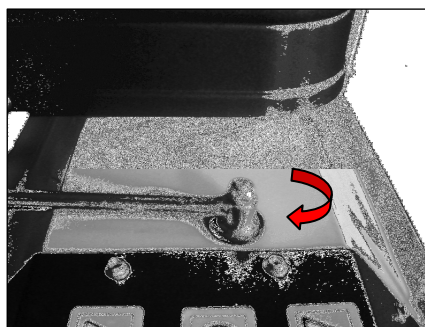


Figure 3

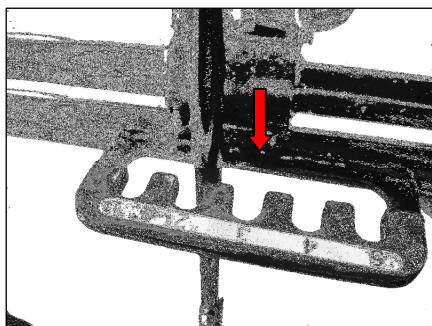
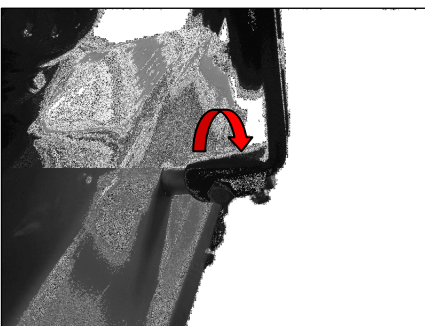



Figure 4



## 4. Operation

 **Warning:** before using this unit, read through the safety instructions in the first part!

### 4.1 How to start the engine

1. Turn the switch to “ON”.
2. Open the choke and accelerator.

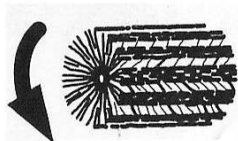
### 4.2 Turn off the engine

Turn the switch of engine to “OFF” and the engine will turn off.

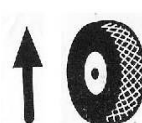
### 4.3 Operation of clutches (left & right handlebar)

1. Operation of clutch on left handlebar: the clutch on the left handlebar controls the brush operation through the clutch on the handlebar.
  - A. In the loosing position, the sweeper won't start sweeping
  - B. Press the clutch downward and the sweeper will starts to work.
2. Operation of clutch on right handlebar: the right handlebar with the function of: DRIVE CONTROL. (The user will be able to choose the speed gear according to the need and move the equipment forward at a various speeds)

Left Handle Bar



Right Handle Bar



### 4.4 Selection of speed transmission

This unit has a five-gear transmission that can be chosen by adjusting the speed transmission rider. Usually use 1 ~ 3 gear for sweeping. Use 4~5 gear for not sweeping but moving forward equipment.

- A. Push the speed transmission rider forward and disengage it from the speed limit frame;
- B. Slide right or left to the required position through the rider. Then release the rider and set the transmission slot.

### 4.5 Operation of support wheel

The support wheel plays a role of supporting and turning the unit, and also for adjusting the height of the brush.

- A. Increase the height of the brush by rotating the rider of the support wheel clockwise.
- B. Decrease the height of the brush by rotating the rider of the support wheel counterclockwise.

### 4.6 Adjust the direction of the brush

Pull the direction adjustment rider of the brush and adjust the direction of the brush roller.

- A. Turn the roller right by pulling the rider backward

B. Turn the roller left by pushing the rider forward.

#### **4.7 Adjust the height of the rider**

The height of the rider may be adjusted for people of different heights.

A. One hand holds the rider, while the other rotates the adjustable rider upward. Release the lock device between the upper rider and lower rider.

B. Increase or decrease the rider to the correct height. Lock the lock device between the upper rider and lower rider.



**Warning! Protective equipment is recommended when you use this machine.**

### **5. Maintenance**

- 1 . Regularly clear dirt from the unit.
- 2 . Never operate a gasoline engine in an enclosed room or area.
- 3 . Keep away from fire sources
- 4 . Never leave this unit in direct sunlight, because some parts are made of plastic and may be damaged.

Notice: the following maintenance shall be implemented on schedule for long term reliable service:

- Regularly inspect for any obvious defects, i.e. the brush is loose, misaligned or damaged, fasteners are loose or elements are damaged.
- Inspect if the rider is damaged or misaligned. Necessary maintenance shall be implemented prior to use.
- Any failure to work due to manufacturing or testing shall be maintained and repaired by professional customer service agencies.
- This operation manual is prepared based on the latest type of this unit. The manufacturer reserves the right to modify it without notice.

### **6. Warranty**

The importers of this company shall determine the warranty. Within the warranty, free parts for your product, due to any cause or reasons arising from the materials and the unit shall be available. If you want to repair your unit, please contact the distributor or local agency.

If you are worried about the performance of your machine, check the troubleshooting on page 8. Any further questions, please contact the distributor.

## Terms and Conditions of Delivery

Unpack this unit carefully and ensure that all the following parts are present:

- Two brushes
- Unit body and its fittings
- Upper rail and adjustment lever handle
- Support wheel and adjustment lever for support wheel
- Brush adjustable rider

**In case of any missing or damaged parts, contact the dealer immediately.**

### 7. Key technical parameters

	SSG5580A/C	SSG65100A/C	SSG80120A/C
NW	104 kg	105 kg	110 kg
Cleaning width	80 cm	100 cm	120 cm
Moving speed	2.7 ~4.8 km/h	2.7~4.8 km/h	2.7~4.8 km/h
Size	170×80×120 $cm^3$	170×100×120 $cm^3$	170×120×120 $cm^3$
Max Output	5.5 hp/4.1 kw	6.5 hp/4.8 kw	8 hp/5.9 kw
Max Sweeping speed	3840 $m^2 / h$	4800 $m^2 / h$	5760 $m^2 / h$
Fuel Type	Gasoline	Gasoline	Gasoline
Vibration	5.826	7.766	11.204

### 8. TROUBLE SHOOTING

Fault	Possible cause	Corrective actions
Engine does not start	Consult engine manual	Consult engine manual
Engine runs unevenly (stutters)	Consult engine manual	Consult engine manual
Machine does not sweep	V-belt slack or torn	Have slack V-belt tightened. Have torn V-belt replaced.
Machine does not drive along	Coupling cable for drive system not adjusted correctly	Adjust coupling cable
	V-belt slack or torn	Have slack V-belt tightened. Have torn V-belt replaced.
	Friction-wheel rubber torn	Have friction-wheel rubber replaced
Excessive vibration	Loose parts or damaged worn	Stop engine, immediately and pull off spark-plug connector. Tighten loose bolts and nuts. Have damaged worm repaired.
Gears can only be changed with difficulty	Coupling cable for drive system not adjusted correctly	Adjust coupling cable
	Shift lever not correctly adjusted	Adjust shift lever